

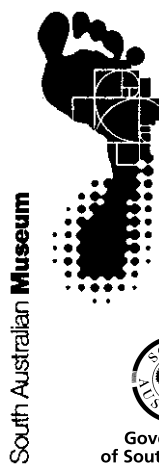
SOUTH AUSTRALIA

ANNUAL REPORT

OF THE

**SOUTH AUSTRALIAN
MUSEUM BOARD**

2007-2008



September 2008

South Australian Museum
North Terrace
Adelaide, South Australia 5000
www.samuseum.sa.gov.au

Head of Development
Telephone +61 (08) 8207 7641

For copies of this document please contact:

Website: www.samuseum.gov.au
Telephone: +61 (08) 8207 7431
Facsimile: +61 (08) 8207 7643

ISSN 0375-1619

**ANNUAL REPORT
of the
SOUTH AUSTRALIAN MUSEUM BOARD
2007-08**

CONTENTS	Page No.
<hr/>	
1. ROLE, LEGISLATION, STRUCTURE	3
<hr/>	
2. ACHIEVEMENTS AND INITIATIVES	5
<hr/>	
Introduction	
Alignment with SA Strategic Plan Objectives	
Highlights	
Visitation	
Exhibitions	
Focus Displays	
Touring Exhibitions	
Education Services	
Talks and Tours	
Aboriginal Reconciliation	
Science	
The Collections	
Foundation	
Support Organisations	
Volunteer Support	
Work Experience	
Staff Achievements and Awards	
Commercial Activities	
Media	
Energy Efficiency	
<hr/>	
3. PUBLICATIONS – SOUTH AUSTRALIAN MUSEUM STAFF 2007-08	18
<hr/>	
4. STAFF LIST	31
<hr/>	
5. HUMAN RESOURCES	35
<hr/>	
6. OCCUPATIONAL HEALTH, SAFETY AND INJURY MANAGEMENT (OHS&IM)	39
<hr/>	

7.	FREEDOM OF INFORMATION ACT, 1991 PART 11 SECTION 9(2)	46
8.	INDEPENDENT AUDIT REPORT	48
9.	FINANCIAL STATEMENTS	49
10.	NOTES TO THE FINANCIAL STATEMENTS	53

ANNUAL REPORT OF THE SOUTH AUSTRALIAN MUSEUM BOARD 2007-2008

1. ROLE, LEGISLATION, STRUCTURE

ROLE AND LEGISLATION

The role of management of the South Australian Museum is prescribed under the South Australian Museum Act, 1976-1985.

To increase knowledge and understanding of our natural and cultural heritage: to serve the community by acquiring, preserving, interpreting and presenting to the public, material evidence concerning people and nature; and to provide opportunities for study, education and enjoyment.

The South Australian Museum is a Division of Arts South Australia within the Department of the Premier and Cabinet. The South Australian Museum Board comprises eight people appointed by the Minister. The Board functions as a body corporate.

Members of the Board during 2007-08 were:

Mr John Ellice-Flint – Chair

Mr Paul Ah Chee

Ms Nyra Bensimon

Ms Noelene Buddle

Dr Sue Carthew

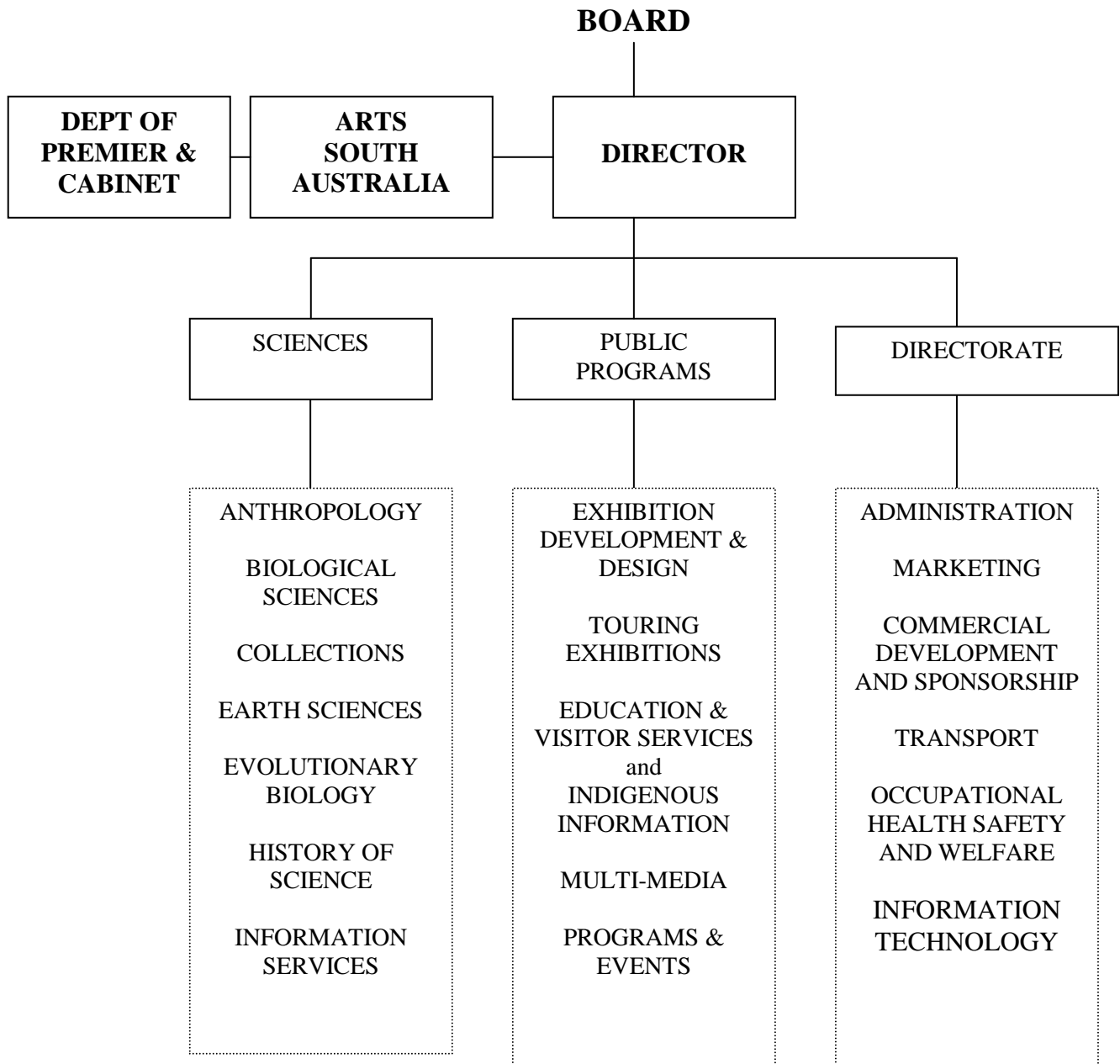
Mr Robert Edwards AO

Ms Elizabeth Perry

Mr Antony Simpson

STRUCTURE

The organisational structure of the South Australian Museum is outlined as follows:



2. ACHIEVEMENTS AND INITIATIVES

INTRODUCTION

As ever, the year has been one of sustained activity and challenge.

The development and adoption of a new strategic plan developed by the Director, Dr Suzanne Miller, in consultation with all major Museum stakeholders and embracing all operational activities of the Museum has provided a forward template of priorities and focus. In essence, the strategic plan addresses:

- Continuing endeavours to ensure the Museum engages with the South Australian community at the broadest level,
- Accessibility to the Museum's collections incorporates the latest technologies including digitisation and electronic access,
- Scientific research excellence is maintained and further developed,
- Partnership, collaboration occurs with the States Universities and,
- The Museum consistently ensures the optimum utilisation of all available resources.

The adoption of the strategic plan has been reflected in the Museum's ongoing diverse public program of exhibitions, events, and activities combined with continuing science research and collections excellence that is reflected in the ongoing success of research grant funding, publications and collection acquisition through ongoing donations.

ALIGNMENT WITH THE SOUTH AUSTRALIAN STRATEGIC PLAN OBJECTIVES

The Museum continues to sustain and develop its commitment to key objectives of the South Australian Strategic Plan. In particular,

- Growing prosperity - through scientific research with economic implications and maintaining appropriate links to and promotion of the State's tourism industry
- Improved well-being - as a key resource in the cultural and scientific life of the State
- Attaining sustainability - through the Museum's endeavours in energy and water conservation and the promotion of sustainability initiatives through its public programs. Planning for the new Biodiversity Gallery further incorporates significant messages associated with sustainability.
- Fostering creativity and innovation - in widening its audience participation through its active support for initiatives such as the Waterhouse Natural History Art Prize
- Building communities - through its outreach and regional roadshow programs and
- Expanding opportunity - with its delivery of innovative curriculum related education programs, promotion of science career opportunities and scientific research partnerships with South Australian Universities.

HIGHLIGHTS

Waterhouse Natural History Art Prize 2007

Continuing the development of this major event on the Australian Arts calendar the Museum announced, at the presentation evening on 3 August, an increase in prize money to the

overall winner from \$30,000 to \$50,000 applying from 2008. This announcement now reflects a total prize purse of \$107,500 to be shared by the overall and category prize winners.

Also, at the presentation evening, Chairman of the Museum Board, Mr John Ellice-Flint, paid tribute to the contribution the Waterhouse Natural History Art Prize has made to the Australian visual arts scene outlining that during its initial five years of operation more than \$1 million has been returned to participating artist entrants via both prize money and the sale of art work.

Biodiversity Gallery Progress

This project is the largest permanent gallery development the Museum has undertaken since the major refurbishment of 2000 and represents an ambitious program.

Occupying 850m² of the Museum's east wing the new gallery will showcase the extraordinary diversity of South Australia incorporating some 1500+ specimens drawn from the Museum's collections with supporting models and audio-visual enhancement. Taking the visitor on a journey from the deep seas off South Australia's coastline through to the arid north of the State the new gallery will incorporate significant messages on the fragility of our natural environment.

Substantial progress has occurred in respect of the gallery's development with overall design work having been successfully tendered to Adelaide-based architects Grieve-Gillet who are working in partnership with Melbourne-based Mothers Art and Adelaide based audio-visual specialists Bluebottle. These organisations are now, in conjunction with the internal Museum team working to formulate the overall design concept for the new gallery. Concurrently work on specimen collection, identification and preparation is continuing and the Museum looks forward to opening this new gallery in 2009.

Ara Irititja

The "Ara Irititja" (which means 'stories from a long time ago') project commenced in 1994 for Pitjantjatjara and Yankunytjatjara people of the Western Desert or Anangu and is administered by the Pitjantjatjara Council. The main purpose of the project is to repatriate lost cultural and historical material to Anangu to enable them to manage and control their own culture and history and determine how they are presented to the wider community.

Anangu have recognised that the environmental conditions in their country are not conducive to storing physical materials in the long term. Consequently, the Ara Irititja project liaises with other institutions and individuals to ensure archival material relating to Anangu is identified, reproduced and stored electronically onto an interactive database that ensures the preservation, development and promotion of Pitjantjatjara and Yankunytjatjara language, history and culture.

The Museum has supported the Ara Irititja project since its inception by providing accommodation, storage for donated material and digital back-ups, funding application support and provision of archival material for project inclusion.

In June, the South Australian Government recognised the success of the project by providing a commitment to funding the project through the Museum for a period of four years.

A Memorandum of Understanding between the Museum and the Pitjantjatjara Council has been formalised to recognise this change. The Museum looks forward to contributing to the ongoing viability and development of the Ara Irititja project.

Kaurna Shield Acquisition

At a ceremony on 1 February attended by members of the Kaurna community, the Museum was delighted to formally welcome to the collections a rare Kaurna Shield dating from the 1840's.

The Wokali bark shield is characteristic of those used on the Adelaide Plains during the earliest period of colonial history. The rarity of the object reflects that shields of this type that were made for ceremonial tribal fights if not destroyed during the battle were often subsequently discarded. Also many were destroyed by mounted police in the course of quelling unrest in the Adelaide area.

The shield was purchased from a private collector with funds provided by the Federal Governments National Cultural Heritage Account and a significant donation by the Adelaide City Council.

Consolidation of Aboriginal Photo Collection to the Museum Archive

An Aboriginal Photographic Collection comprising over 9,000 photographic images and negatives of South and Central Australian Aboriginal people from the 1870s to the early 1990s had been collected by the Aboriginal Affairs and Reconciliation Division over the last 20 years. To ensure the ongoing accessibility of this invaluable resource, the Department of Aboriginal Affairs and Reconciliation proposed the collection become incorporated within the Museum's Aboriginal archive to facilitate ongoing care and accessibility.

Following a formal Memorandum of Understanding the transfer of the photographic collection occurred on 12 April at an official handover by the Minister for Aboriginal Affairs and Reconciliation, the Honourable Jay Weatherill, to the Chairman of the Museum's Aboriginal Advisory Group, Mr Paul Ah Chee.

Hoff Collection

Seventy five aboriginal artefacts collected from Wirangu and Kokatha people by Pastor Carl Hoff during the late 1920's at the Koonibba Lutheran Mission on the West Coast of South Australia were presented to the Museum by Pastor Hoff's son, Lothar Hoff, at an evening attended by several generations of the Hoff family. The donation more than doubles the Museums holding of artefacts from the Koonibba area.

VISITATION

Visitation to the Museums North Terrace building for the year was 708443. This visitation level was some 3% less than achieved in the proceeding year. The extensive work associated with the remediation of the museum's forecourt garden and lawn area combined with the extreme heat wave in late January early February appeared to contribute to this slight decline in overall numbers.

Reflected in the overall visitation number were 33840 booked school visitors. School visits relate to both State and private schools throughout the metropolitan area ranging from pre-school to Year 12. The majority of school visits are curriculum linked.

For the first time the museum has also commenced recording visitation figures in respect of its touring exhibitions and its regional roadshow program. These activities reflect a further figure of some 60000 visitors interacting with these external museum programs.

EXHIBITIONS

ETSA UTILITIES GALLERY

Waterhouse Natural History Art Prize

3 August – 10 September 2007

The fifth annual Waterhouse Natural History Art Prize attracted 603 entries. Judges Silvio Apponyi, Zoe D, Arcy, Chris Orchard and Museum Director Suzanne Miller selected 107 finalists whose work was displayed in the ETSA Utilities Gallery.

The Melbourne artist Heather Marsh was the overall winner with her work “*The Gift of Hindsight*”.

Bringing Back the Butterflies

22 September – 25 November 2007

The exhibition developed by the Museum, in conjunction with Butterfly Conservation SA, promoted the planting of butterfly host and nectar plants in urban gardens to assist the increase in the overall population of native butterflies.

Concurrent with the exhibition opening a related book *Attracting Butterflies to your garden, what to grow and conserve in the Adelaide region* was also launched. The book has proved to be a highly successful publication in its own right.

Following Garkman

14 December 2007 – 3 February 2008

Bridging the gap between natural and social sciences the exhibition featured the philosophy and stories of the Dhalwangu people of North East Arnhem Land presenting the story of the regions environment and biodiversity through art works, photographs, videos, maps and natural history specimens.

Garkman the totemic frog represented in Dhalwangu culture by the green tree frog acted as the unifying theme of the exhibition. Within this context the exhibition also highlighted the critical role played by frogs as indicators to the health of local eco systems.

Ngurrara – The Great Sandy Desert Canvas

16 February – 16 March 2008

The exhibition was presented as the Museums contribution to the 2008 Adelaide Bank Festival of Arts Program.

Painted by senior traditional owners of the Great Sandy Desert of North Western Australia for presentation to the National Native Title Tribunal in 1997 the focus of this exhibition was the largest and most spectacular Western painting in existence. Accompanied by further paintings and film material made during the artists more recent visits to their ancestral land and enhanced by related artefacts from the museums own collections, the exhibition provided insight into the continuity of ancestral links to the land whilst reflecting the importance of cultural transmission from one generation to the next. The museum was particularly delighted to welcome some of the original artists from Fitzroy Crossing who were able to participate in the exhibitions opening event.

**Wildlife Photographer of the Year
ANZANG**

2 April – 4 May 2008

Resulting from the visitor survey undertaken during the 2006 season of Wildlife Photographer of the Year the Museum hosted the exhibition of this premier photographic exhibition organized by the BBC Wildlife Magazine and the National History Museum of London concurrently with the ANZANG (Australia, New Zealand, Antarctic and New Guinea) Nature and Landscape Photographic Exhibition

Both exhibitions contain outstanding photographs promoting the extraordinary diversity and fascination with the natural world captured in outstanding photographic images.

The joint exhibition has become one of the most anticipated events in the Museums calendar.

Twined Together

17 May – 13 July 2008

This travelling exhibition of Museum Victoria developed in partnership with Injalak Arts and Crafts Association presented works from the Kunwinjku Women of Gunbanja, the “Stone Country of Western Arnhem Land”. The diverse work reflected techniques of twining, coiling and knotting and demonstrated the unique features of the work such as dyes found only in the stone country area. Exhibited works gave an insight into the complexity and artistry of baskets, bags and mats utilized by the Kunwinjku.

**AUSTRALIAN ABORIGINAL CULTURES GALLERY - TEMPORARY
EXHIBITION SPACE**

Desert Master Class

13 October – 25 November 2007

Showcasing works from Indigenous Art centres of the Central and Western Desert regions of Australia the works were drawn from the private collection of Mr Graeme Marshall. The collection exemplified the Desert Art movement in all its intricacy and vibrancy.

From the Heart

7 December 2007 – 13 January 2008

An exhibition of art and craft work created by students from Tauondi College.

Tracks in the Sand

7 March – 2 April 2008

Reflecting contemporary art by Marree Arabunna artists and visiting artists who return regularly to Marree through their friendship with local people and attachment to the Land, the exhibition witnessed country, people and their stories by means of painting, photography, sculpture, installations, music and film.

FOCUS DISPLAYS

Strata – Jason Milanovic

26 October – 23 November 2007

Utilizing the Museum forecourt a range of sculptures inspired by the geological formations of South Australia saw life size figures that embodied the impact of time on the landscape incorporating themes of fragility and relationship to the natural world.

Expediciones Espanalas

Spanish Expeditions to the South Pacific in the 16th-18th centuries

10 November – 2 December 2007

Exhibited in the Pacific Cultures Gallery in partnership with the Spanish Embassy in Canberra the exhibition revealed the stories of Spanish Maritime Exploration to the Pacific predating Captain Cook's voyages and confirming the early engagement of Spanish explorers with the Pacific Islands.

InsideOut Jewellery

19 January – 17 February 2008

Coincidental with the 13th biannual conference of the Jewellers and Metalsmiths group of Australia, held in Adelaide, the Museum hosted two distinct displays in conjunction with the conference. Indigenous jewellery from the Museums collection was shown in the Australian Aboriginal Cultures Gallery Temporary Exhibition Space whilst contemporary jewellery created by Rowena Gough and Elfrun Lach was shown in the Pacific Cultures Gallery. This contemporary jewellery had been created in response to artefacts permanently displayed within the Museums Pacific Cultures collection.

The History of Lighting

29 February – 16 March 2008

Developed in conjunction with volunteers from the ETSA Utilities Sir Thomas Playford Museum the exhibition presented the history of lighting from the candle to modern day. A particular emphasis was on the history and development of public lighting in Adelaide.

This exhibition provided particular interest coincidental with the Northern Lights installation where the Museum participated with its North Terrace Precinct neighbours in the spectacular light show installation that ran throughout the Adelaide Bank Festival of Arts.

In The Line of Duty

Policing in Australia 1788-2006

25 April – 25 May 2008

Exhibited in the Armoury building – the home of the South Australian Mounted Police from 1851-1917 the exhibition was held to coincide with the Adelaide International Police Tattoo. Examining the timeline of important events in the history of Australian Policing the exhibition also coincided with the 170th Anniversary of Policing in South Australia.

SPOTLIGHT SERIES

Developed to highlight the diverse range of donations made to the Museums collections over many years the Spotlight Series based in the Museums north foyer, has provided the opportunity to reflect on the benefit donations provide to the Museums collections whilst acknowledging individual donors. The Spotlight Series is programmed to be an ongoing feature of the Museums Focus Display exhibitions

The Shell and Book Collections of Mr Frank K Godfrey

October – December 2007

Mr Godfrey was the Museums Honorary Assistant Conchologist during the 1930's. His collection of over 4000 shells, with virtually all specimens identified as to their collection location, is a unique representation of the distribution of specimens during Mr Godfrey's

lifetime. Supported with a collection of related published books and materials the entire collection was donated to the Museum by the Godfrey family in January 2007.

Hermansberg Rug

January – March 2008

Purchased by the Museum Board, this rare rug was made in 1965 by aboriginal tannery workers for a local governess and serves as an example of how indigenous people pursued a mix of traditional and European activities within the mission environment.

Amazing Minerals

April – June 2008

Showcasing a number of individual collectors the exhibited specimens reflected the diversity of mineral and gem stones donated over many years that have enhanced the local, national and international areas of the Museums collection.

TOURING EXHIBITIONS

The Policeman's Eye – The Frontier Photography of Paul Foelsche

The Museum curated exhibition, shown in Adelaide in early 2005, continued its national tour visiting the Riddoch Art Gallery, Mount Gambier during August to late September 2007 and was then exhibited at the Bathurst Museum, New South Wales through April and May 2008.

Australia's Muslim Cameleers

Pioneers of the Inland 1860's -1930's

The exhibition developed by the South Australian Museum with funding from Visions of Australia was originally shown in Adelaide in June and July 2007. Within the reporting period the exhibition has subsequently visited the Broken Hill Regional Art Gallery during September – October 2007 and then went to the National Library in Canberra from December 2007 – mid February 2008.

Waterhouse Natural History Art Prize

Following the Adelaide season, the winning entries and highly commended works were exhibited from mid-October to end December 2007 at the National Archives in Canberra. The exhibition reflects the commencement of a five year supporting partnership between the Museum and the National Archives that was announced at the 2006 Waterhouse Natural History Art Prize presentation evening.

Ngurrara

The Great Sandy Desert Canvas

Following exhibition in Adelaide, the Canvas travelled to the National Museum Canberra and was exhibited from April through to late June 2008.

OTHER PROGRAMS

- **National Science Week
18 August -26 August 2007**

The Museum was again the primary activity hub in Adelaide for National Science Week. A diverse program incorporating behind the scenes tours, Science related

workshops, visits to the Museums Netley storage and Bolivar maceration facilities with a collaborative *Science on the Precinct* engaging with the State Library, Art Gallery and ArtLab presented a mixed program of hands on science and science related activities.

- **Biodiversity Month – September 2007**

A range of guest presenters provided workshops associated with Trees for Life, the Development of Urban Forrests and the biodiversity of the Adelaide shoreline. In addition, water conservation, sustainable gardening, energy demand management and issues associated with endangered animal species were also covered in a range of focus displays.

- **Opal Month – October 2007**

Maintaining the Museums association with the Coober Pedy community the Museum hosted a number of Opal related themed workshops and presentations.

- **Tasting Australia – 13-20 October 2007**

The Museum forecourt provided the venue for a Tasting Australia Festival Village whilst the Pacific Cultures Gallery hosted such events as, the James Squire Food, Beer and Wine Writers Festival and the Adelaide Food Summit. The Summit covered issues such as nutrition, food and exercise, effects of food additives, fast and slow food cookery and the role of the media in consumer food choices.

- **Recycling Week – 11th – 17th November 2007**

Developing ideas by which individuals can pursue initiatives to minimize the impact of our contemporary lifestyle on the environment the event promoted opportunities to assist sustainable practices within both the home and work environment.

- **Public Sector Week November 19 – 23 November 2007**

As its contribution to Public Sector week, providing opportunity for the general public to see practical aspects of service delivery and operations, the Museum hosted a number of behind the scenes tours of the Science Centre and a Directors Choice tour of the North Terrace Building identifying particular treasures within the permanent exhibition galleries.

- **Palaeontology Week
22 March – 30 March 2008**

The fifth annual Palaeontology week staged by the Museum incorporated hosted day tours to fossil sights at Burra, Mannum and Hallett Cove. Within the Museum, workshops explored the extraordinary fossil heritage of South Australia and included for the first time online teaching sessions for regional schools. The week also incorporated Museum Roadshows to the South East based at Naracoorte and to Brachina Gorge in the Flinders Ranges. A further collaborative event with Flinders University presented a Palaeo open laboratory jointly staged within the Museum and at Flinders University.

Visiting eminent Palaeontologists appreciably contributed to the workshop programs and included Dr Diego Garcia-Bellido Capdevila from Madrid, Dr John Long from Melbourne, Dr Gilbert Price from Queensland and Dr Gavin Prideaux from Flinders.

This year's Palaeontology Week also included the inaugural Sprigg Lecture named in honour of Dr Reg Sprigg OA the founder of Arkaroola Wilderness Sanctuary, Discoverer of the Flinders Ranges Ediacaran Fossils and one of South Australia's outstanding geologists. The inaugural lecture was given by Dr Paul Willis of the ABC's "Catalyst" Program.

- **Regional Roadshows**

In addition to the Roadshows associated with Palaeontology Week the museum continued its regional outreach program with other Roadshows to Kangaroo Island in April and to the Yorke Peninsula in May. Both these Roadshows actively engaged with regional schools and local communities.

- **Sunday Fundays**

Held on every Sunday afternoon, this program, operated with the support of the Adelaide City Council, provided a series of family orientated activities involving community groups, music, games, juggling workshops and other activities bringing a regular interactive diversion of free entertainment to the North Terrace area.

EDUCATION SERVICES

Museum School Visitation:

The total school visitation to the Museum for the reporting period was 33840 students.

School visitors experienced programs across all permanent exhibition galleries of the Museum.

The Department of Education and Children's Services Education Officers (DECS)

Two education officers on secondment from DECS continue to provide ongoing support to teachers and school groups visiting the Museum. Working closely in collaboration with the Museum's public programs and science staff the education officers were able to ensure innovative current teaching and learning programs were accessible to all school visitors.

The Travelling Education Service

Between June and December some 9940 students accessed the exhibition *Life and Adaptions to Water* that visited schools in the mid North, Riverland, Murray Bridge, Tailem Bend and Roxby Downs. The online teaching program *Centra*, was used to assist teachers in country schools with access to the Museums education resources.

Special programs

A number of special programs were developed in association with Science week, the Waterhouse Natural History Art Prize exhibition, and Palaeontology week. In addition a new Pacific Cultures Gallery program was initiated in collaboration with teachers and members of the Pacific Islands community in Adelaide.

Teacher Professional Development

Professional Development for teachers remains a priority and the Museum education officers presented workshops at the South Australian Science Teachers Conference, the Primary Connections science initiative and development programs related to new Museum exhibitions.

Holiday Programs

Structured holiday programs continue to attract significant numbers of families.

Related where possible to the Museums temporary exhibitions program, holiday activities provision extensive opportunities for visitors to engage with hands-on science or exhibition themed art and craft. Activities had an emphasis on dinosaurs and fossils, frogs, butterflies and bugs. In addition, each program maintained ongoing opportunities to experience indigenous music, art and craft activities including dot painting and jewellery making.

TALKS AND TOURS

The Museum continued its program of inviting external speakers to present their subjects of specific expertise. With a focus on water and related environmental and biological issues the program retained a good level of support.

Subject areas covered during the reporting period were:

July

The Evolution of Air-Breathing

Associate Professor Sandra Orgeig

September

Regenerating Limbs – Facts or Fiction?

Associate Professor Chris Daniels

October

Recycling Water in the Home – How far Will People Go?

Dr June Marks

March

Sustainable Development for Gardens

Alison Aplin, Timandra Garden Design

April

Is It Safe?

Dr David Cunliffe, Principal Water Quality Adviser,
Department of Health

May

SA Water- How Does it Work?

Mr John Ringham, Chief Operating Officer
SA Water

ABORIGINAL RECONCILIATION

The Museum continues its active participation in the Return of Indigenous Cultural Property program funded by the Federal Government. Consultations continue with Aboriginal communities and senior custodians within both South Australia and interstate to inform the collections and as appropriate, enact repatriation to traditional owners of ancestral remains and secret/sacred objects.

As reflected in the Museums overall exhibition program the year has seen considerable emphasis placed on exhibitions that promote and present Indigenous culture.

SCIENCE

The Museum has maintained its formidable reputation in science research.

Museum researchers were responsible for published papers describing two of the top ten new species identified in 2007 as judged by an international committee of experts.

A new species of taipan (Elapidae:Oxyuranus) from central Australia and a new species of Irukandjii jellyfish (Cnidaria:Cubozoa:Carybdeida) from Queensland were both subject to publication in *Zootaxa*.

Within Parasitology, PhD student Vanessa Glennon, won the inaugural award for Best Publication in 2007 awarded by the School of Earth & Environmental Sciences at the University of Adelaide.

A featured publication in *Zootaxa* by Principal Researcher Dr Ian Whittington, was regarded as a significant contribution in reporting a second monogenean flatworm species from the skin of the Atlantic halibut, *Hippoglossus hippoglossus*.

Within Mineralogy, Senior Researcher Dr Joël Brugger, was awarded an Australian Research Centre Professorial Fellowship. Further Dr Brugger was invited to present a paper at the Goldschmidt Conference in Vancouver, the premier world conference on geochemistry.

Within Anthropology, continued critical acclaim was received in respect of two major publications being Dr Philip Clarke's *Aboriginal Plant Collectors. Botanists and Australian Aboriginal People in the Nineteenth Century* and Dr Philip Jones *Ochre and Rust. Artefacts and Encounters on Australian Frontiers*.

Within Palaeontology, Senior Researcher Dr Jim Gehling, co-authored a paper published in the International journal *Science* on new fossils from the Ediacara biota:

Museum Science staff continue their extraordinarily diverse support in undertaking a wide variety of talks and presentations on their work to a range of scientific conferences, specialist interest groups, community and service groups, and schools. Additionally staff readily provided input to an extensive range of media enquiries relevant to their specific areas of expertise.

THE COLLECTIONS

A major exercise has been pursued to revise the Museum's Collections Policy to incorporate collecting priorities. This work provides the Museum with a clear picture of its collection strengths and identifies gaps that remain as priorities for future acquisitions. In addition, this revision allows a more tailored consideration of the overall needs and direction of the South Australian focus of the collections and will facilitate a cooperative basis with other Museum's to minimise overlaps in collections development.

FOUNDATION

The South Australian Museum Foundation continues its fund raising endeavours on behalf of the Museum and has particularly concentrated on further fund raising associated with the development of the Biodiversity Gallery.

SUPPORT ORGANISATIONS

The Museum remains appreciative of the outstanding support it receives from its principal support organizations – The Waterhouse Club and the Friends of the South Australian Museum.

The Waterhouse Club celebrated its 21st Anniversary and continued its program of expeditions to major anthropological and fossil sites within South Australia and interstate. In addition, its social events continue to attract an enthusiastic and ever growing number of supporters.

The Friends of the South Australian Museum maintained their range of talks and activities promoting the understanding and interpretation of the Museums collections and research activities.

The Museum remains grateful to both organizations with their ongoing commitment.

VOLUNTEER SUPPORT

Museum volunteers continue to provision an extraordinary range of support activities to the operations of the Museum. In many areas of collections maintenance, research support and visitor services volunteer contribution is never failing in assisting the Museum.

WORK EXPERIENCE

As a component of its community engagement, the Museum maintained its efforts to offer secondary and tertiary students appropriate work experience placements. Sixteen placements have been awarded across both science and public program activities.

STAFF ACHIEVEMENTS AND AWARDS

Aphrodite Rose, Collection Manager Foreign Ethnology undertook a 3 month internship at the Pitt Rivers Museum Oxford.

Dr Steve Cooper, Senior Researcher in Evolutionary Biology, was awarded an Associate Professorship by the University of Adelaide reflecting the ongoing researching and teaching collaboration between the Museum and the University.

COMMERCIAL ACTIVITIES

The Museum continues to develop its commercial activities with the objective of enabling such activities to support and provision further free access programs and services for visitors.

Venue Hire

Continuing marketing endeavours have enhanced awareness and reputation of the Museum's venue hire opportunities. The redeveloped Pacific Cultures Gallery is proving an attractive venue for corporate functions. The Museum is also pleased to see an increasing number of interstate organisations hiring the Museum's gallery spaces.

Sponsorship/Business Development

Continuing partnerships with a wide range of commercial organisations have assisted the Museum in both cash and 'in kind' sponsorships. In particular the Museum has appreciated the partnerships associated with the support of individual exhibitions.

The Museum remains ever grateful for the support of all its sponsor partners and donors.

MEDIA

The Museum continues to enjoy positive exposure in all forms of electronic and print media, both locally and nationally. This ongoing relationship reflects the capacity of the Museum to generate interesting editorial coverage in respect of its exhibitions and activities whilst also

being able to provide, as appropriate, expert opinion relating to the diverse range of research activities.

Website

During the year the website continued to experience wide usage recording an overall total of 1090650 visits.

ENERGY EFFICIENCY

The Museum maintains its commitment to energy efficiency by means of an ongoing program supported by all Museum staff. An energy efficiency review was undertaken by Energy Focus in conjunction with Arts SA in April and the Museum looks forward to enacting any initiatives arising from this review.

Within the design brief of the new Biodiversity Gallery considerable attention is being given to incorporating energy efficiency within the gallery display.

3. PUBLICATIONS – SOUTH AUSTRALIAN MUSEUM STAFF 2007-08

3.1 Books and monographs:

Hunt, L.F, Grund, R., Keane, D.K. and **Forrest J.A.** (2007). *Attracting Butterflies to your Garden, What to Grow and Conserve in the Adelaide Region*. Butterfly Conservation SA Inc.

Fedonkin, M.A., **Gehling, J.G.**, Grey, K., Narbonne, G.M. and Vickers-Rich, P. (2008). *The Rise of Animals. Evolution and Diversification of the kingdom Animalia*. JohnsHopkins Press, Washington, 302 pp.

Pikacha, P., **Morrison, C.** and **Richards, S.** (2008). *Frogs of the Solomon Islands*. Institute of Applied Sciences, Suva, Fiji.

Veth, Peter, **Peter Sutton** and Margo Neale (eds) (2008). *Strangers on the Shore: Early Coastal Contacts in Australia*. National Museum of Australia Press, Canberra.

3.2 Chapters in books:

Craig, B. (2007). Edgar Waite's 'North-West Pacific Expedition' - the 'hidden' collections. In, *Hunting the Collectors: Pacific Collections in Australian Museums, Art Galleries and Archives*. Cambridge: Cambridge Scholars Publishing. Pp. 173-195.

Gehling, J.G. (2007). Fleshing out the Ediacaran Period. In, Vickers-Rick, P. and Komarower, P. (eds). *The Rise and Fall of the Ediacara Biota*. Geological Society, London, special publications, **286**: 195-222.

Jenkins, R.J.F. (2007). "Ediacaran" as a name for the newly designated terminal Proterozoic period. In, Vickers-Rich, P. and Komarower, P. (eds). *The Rise and Fall of the Ediacara Biota*. Geological Society, London, special publications, **286**: 137-142.

Kear, B. P., Rich, T. H., Ali, M. A., Al-Mufarrih, Y. A., Matiri, A. H., Masary, A. M. and Yousry, A. (2008). Late Cretaceous (Campanian-Maastrichtian) marine reptiles from the Adaffa Formation, NW Saudi Arabia. *Geological Magazine* doi:10.1017/S0016756808005062.

Kear, B. P., Lee, M. S. Y., Gerdtz, W. R. & Flannery, T. F. (2008). The evolution of hind limb proportions in kangaroos (Marsupialia: Macropodoidea). Pp. 25-35. In *Mammalian Evolutionary Morphology: A Tribute to Frederick S. Szalay*, (E. J. Sargis & M. Dagosto eds). Springer, Dordrecht, The Netherlands, 400 pp.

Kemper, C., Bossley, M. and **Shaughnessy, P.** (2008). Marine mammals of Gulf St. Vincent, Investigator Strait and Backstairs Passage. in 'Natural History of Gulf St. Vincent.' (Eds S. Shepherd, S. Bryars, P. Harbison, I. Kirkegaard and J. T. Jennings). Pp. 339-352. Royal Society of South Australia, Adelaide.

Mahoney, J.A., Smith, M.J. and **Medlin, G.C.** (2008). Broad-cheeked Hopping Mouse *Notomys robustus*. Pp. 609-611 in 'The Mammals of Australia', edited by S. Van Dyck and R. Strahan. Third Edition, Reed New Holland: Sydney.

Medlin, G.C. (2008). Long-eared Mouse *Pseudomys auritus*. Pp. 615-615 in 'The Mammals of Australia', edited by S. Van Dyck and R. Strahan. Third Edition, Reed New Holland: Sydney.

Tzioumis, V. and **Shaughnessy, P.** (2007). Seals/Dugong. Chapter 11 in 'Description of Key Species Groups in the East Marine Planning Region'. Eds Tzioumis, V. and Keable, S. Consultancy report to East Marine Planning Section, Department of the Environment and Water Resources. (Australian Museum: Sydney).

Sutton, Peter (2007). Arthur Koo'ekka Pambegan Jr. In Brenda Croft (ed), *Culture warriors: National Indigenous Art Triennial*, pp32-36. Canberra: National Gallery of Australia.

Sutton, Peter (2007). Mapping the landscape. In National Library of Australia: *Australia in maps: great maps in Australia's history from the National Library's collection*, pp8-9. Canberra: National Library of Australia.

Sutton, Peter (2007). Some history. In Peter Sutton and Joanna Bosse, *Puulway: Wik and Kugu Totems. Contemporary Australian Sculpture from Aurukun* [catalogue]. Melbourne: Gallery Gabrielle Pizzi.

Sutton, Peter (2008). Stories about feeling: Dutch-Australian contact in Cape York Peninsula, 1606-1756. In P. Veth, P. Sutton and M. Neale (eds) *Strangers on the Shore: Early Coastal Contacts in Australia*, pp35-59. Canberra: National Museum of Australia Press.

Sutton, Peter, and Peter Veth (2008). Introduction and themes. In P. Veth, P. Sutton and M. Neale (eds) *Strangers on the Shore: Early Coastal Contacts in Australia*, pp1-5. Canberra: National Museum of Australia Press.

Warner, L.R. and Wooller, J. (2007). 'Barriers to Women in Science: a cautionary tale for the information technology community'. Chapt 11 in Asprey W., Burger C. and Kahle B.J.(eds) *Reconfiguring the Firewall: Recruiting Women to Information Technology across Cultures and Continents*. AK Peters, Wellesley, Massachusetts.

3.3 Scholarly journal papers:

Smith, L. A., and **Adams, M.** (2007). Revision of the *Lerista muelleri* species-group (Lacertilia: Scincidae) in Western Australia, with a redescription of *Lerista muelleri* (Fischer, 1881) and the description of nine new species. *Records of the Western Australian Museum* **23**: 309-357.

Kawakami, T., Butlin, R. K., **Adams, M., Saint, K. M.,** Paull, D. J. and **Cooper, S. J. B.** (2007). Differential gene flow of mitochondrial and nuclear DNA markers among chromosomal races of Australian morabine grasshoppers (*Vandiemenella, viatica* species group). *Molecular Ecology* **16**: 5044-5056.

Austin A. D., Cooper, S. J. B., and Humphreys, W. F. (2008). Preface to Special Issue on Subterranean Connections: biodiversity and evolution in troglobiotic and groundwater ecosystems. *Invertebrate Systematics* **22**: III.

Harvey, M. S., **Austin. A. D.,** and **Adams, M.** (2007). The systematics and biology of the spider genus *Nephila* (Araneae: Nephilidae) in the Australasian region. *Invertebrate Systematics* **21**: 407-451.

Brugger, J., Etschmann, B., Liu, W., **Testemale, D.,** Hazemann, J.-L., van Beek, W. and Proux, O. (2007). An XAS study of the chloride complexing of Cu(I) in brines. *Geochim. Cosmochim. Acta*, **71**: 4920-4941.

Brugger, J., Meisser, N., Krivovichev, S. and Armbruster, T. and Favreau, G. (2007). Bouazzerite from Bou Azzer, Anti-Atlas, Morocco: As-Bi-Fe nanoclusters containing Fe(III) in trigonal prismatic coordination. *American Mineralogist*, **92**: 1620-1639.

Favreau, G., Dietrich, J. E., Meisser, N., **Brugger, J.,** Ait Haddouch, L. and Maacha, L. (2007). Bou Azzer, Morocco. The Mineralogical Record, **38**: 345-407.

Xia F., Zhuo, J., Ngothai, Y., O'Neill, B., **Brugger, J.,** Chen G., and **Pring, A.** (2008). A novel route to synthesize complex metal sulfides: hydrothermal coupled dissolution-reprecipitation reactions. *Chemistry of Materials* **20**: 2809-2817.

Elliott, P., **Brugger, J., Pring, A.,** Cole, M.L., Willis A.C. and Kolitsch, U. (2008). Birchite a new mineral from Broken Hill, New South Wales: description and structure refinement. *American Mineralogist*, **93**: 910-917.

Kawakami, T., Butlin, R. K., Paull, D. J. and **Cooper S. J. B.** (2007). Polymorphic microsatellite markers for chromosomal races of Australian morabine grasshoppers (*Vandiemenella, viatica* species group). *Molecular Ecology Notes* **7**: 1181-1184.

Brown, M., Carthew, S. M., and **Cooper S. J. B.** (2007). Monogamy in an Australian arboreal marsupial, the yellow-bellied glider (*Petaurus australis*). *Australian Journal of Zoology* **55**:185-195.

Chenoweth, L. B., Tierney, S. M., Smith, J. A., **Cooper, S.J.B.,** and Schwarz, M. P. (2007). Social complexity in bees is not sufficient to explain lack of reversions to solitary living over long time scales. *BMC Evolutionary Biology* **7**: 246.

Pestell, A. J. L., **Cooper, S. J. B., Saint, K. M.**, and Petit S. (2008). Genetic structure of the western pygmy possum, *Cercartetus concinnus* Gould (Marsupialia: Burramyidae), of southern Australia. *Australian Mammalogy* **29**: 191-200.

Cooper, S. J. B., Saint, K. M., Taiti, S., **Austin, A. D.**, and Humphreys, W. F. (2008). Subterranean archipelago: mitochondrial DNA phylogeography of stygobitic isopods (Oniscidea: *Haloniscus*) from the Yilgarn region of Western Australia. *Invertebrate Systematics* **22**: 195-203.

Guzik, M. T., Abrams, K. M., **Cooper, S. J. B.**, Humphreys, W. F., Cho, J-L., and **Austin, A. D.** (2008). Phylogeography of the ancient Parabathynellidae (Crustacea: Bathynellacea) from the Yilgarn region of Western Australia. *Invertebrate Systematics* **22**: 205-216.

Allford, A., **Cooper, S. J. B.**, Humphreys, W. F., and **Austin, A. D.** (2008). Diversity and distribution of groundwater fauna in a limestone aquifer: does sampling alter the story? *Invertebrate Systematics* **22**: 127-138.

Craig, B. (2007). A stone tablet from Buka Island, Bougainville Autonomous Region. In, Archaeological Studies of the Middle and Late Holocene, Papua New Guinea. Part IX. *Technical Reports of the Australian Museum* **20**: 255-61.

Gardner MG, Bull CM, Fenner A, Murray K, **Donnellan SC.** (2007). Consistent social structuring within aggregations of the Australian lizard, *Egernia stokesii* across seven disconnected rocky outcrop sites. *Journal of Ethology* **25**: 263-270.

Rabosky D.L., **Donnellan S.C.**, Talaba A.L., Lovette I.J. (2007). Exceptional among lineage variation in diversification rates during the radiation of Australia's most diverse vertebrate clade. *Proceedings of the Royal Society of London Series B* **274**: 2915-2923.

Frost D.R., Grant T., Faivovich J., Bain R.H., Haas A., Haddad C.F.B., de Sa RO, Channing A., Wilkinson M., **Donnellan S.C.**, Raxworthy C.J., Campbell J.A., Blotto B.L, Moler P., Drewes R.C., Nussbaum R.A., Lynch J.D., Green D.M., Wheeler W.C. (2007). Is The Amphibian Tree of Life really fatally flawed? *Cladistics* **23**: 1-11.

Rawlings, L. H., Rabosky, D. L., **Donnellan, S. C.** and **Hutchinson, M. N.** (2008). Python phylogenetics: inference from morphology and mitochondrial DNA. *Biological Journal of the Linnaean Society* **93**: 603-619.

Jackway R.J. Pukala T.L., Maselli V.M., Musgrave I.F., Bowie J.H., Liu Y., Surinya-Johnson K.H., **Donnellan S.C.**, Doyle J.R., Llewellyn L.E., Tyler M.J. (2008). Disulfide-containing peptides from the glandular skin secretions of froglets of the genus *Crinia*: Structure, activity and evolutionary trends. *Regulatory Peptides* (online 17 June 2008).

Etschmann, B., Ryan, C., Vogt, S., Maser, J., Harland, C., **Brugger, J.** and Legnini, D. (2007). Selective X-ray Bragg Spectrometry: Optimising Fluorescence Microprobe Sensitivity for Precious Metals. *X-Ray Spectrometry*, **36**: 111-121.

- Hugall, A., **Foster, R., Lee, M. S. Y. and Hutchinson, M. N.** (2008). Phylogeny of Australasian agamid lizards based on nuclear and mitochondrial genes: implications for morphological evolution and biogeography. *Biological Journal of the Linnean Society* **93**: 343-358.
- Hugall, A., Foster, R., Lee, M. S. Y. (2007). Calibration Choice, Rate Smoothing, and the Pattern of Tetrapod Diversification According to the Long Nuclear Gene RAG-1. *Systematic Biology* 56: 543-563.
- Droser, M.L. and **Gehling, J.G.** (2008). Reproduction and synchronous aggregate growth in a new Ediacaran tubular organism. *Science* **319**: 1660-1662.
- Peterson, K., Cotton, J.A., **Gehling, J.G.** and Pisani, D. (2008). MicroRNAs and the advent of vertebrate morphological complexity. *Philos Trans R Soc Lond B Biol Sci.* **10**: 1098/rstb.2007.2233.
- Hamilton-Bruce, R.J. and Kear, B.P.** (2007). A new fossil non-marine snail (Gastropoda) from the Lower Cretaceous (Albian, Griman Creek Formation) of eastern Australia *Molluscan Research* **26**(2): 84–88.
- Carpenter, R.J., Jordan, G.J. and **Hill, R.S.** (2007). A toothed Lauraceae leaf from the Early Eocene of Tasmania, Australia. *International Journal of Plant Science* **168**: 1191-1198.
- Paull, R. and **Hill, R.S.** 2008. Oligocene *Austrocedrus* from Tasmania (Australia): comparisons with *Austrocedrus chilensis*. *International Journal of Plant Sciences* **169**: 315-330.
- McLoughlin, S., Carpenter, R.J., Jordan, G.J. and **Hill, R.S.** (2008). Seed ferns survived the end-Cretaceous mass extinction event in Tasmania. *American journal of Botany* **95**: 465-471.
- Baxter, C. and **Horton, P.** (2008). Additions to the Kangaroo Island avifauna. *South Australian Ornithologist* **35**: 96-103.
- Fenner, A. L., Bull, C. M. and **Hutchinson, M. N.** (2007.) Omnivorous diet of the endangered pygmy bluetongue lizard, *Tiliqua adelaidensis*. *Amphibia-Reptilia* **28**: 560-565
- Hutchinson, M., Adams, M.** and Ehmman, H. (2008). *Aprasia aurita* (Squamata, Pygopodidae), an addition to the lizard fauna of South Australia. *Herpetofauna* **37**: 98-103.
- Fuller, M., and **Jenkins, R.J.F.** (2007). Reef corals from the lower Cambrian of the Flinders Ranges, South Australia. *Palaeontology*, Vol. **50**: (4) 961 – 980.
- Jenkins, R. J. F. & Nedin, C.** (2007). The Provenance and palaeobiology of a new multi vanned, chambered frondose organism from the Ediacaran (later eoproterozoic) of South Australia. *In: Vickers-Rich, P. & Kamarower, P. (eds) The Rise and Fall of the Ediacaran Biota.* Geological Society, London, Special Publication, **286**: 195-222.

Kear, B. P. and Pledge, N. S. (2008). A new fossil kangaroo from the Oligocene Miocene Etadunna Formation of Ngama Quarry, Lake Palankarina, South Australia. *Australian Journal of Zoology* **55**: 331-339.

Kear, B. P. and Godthelp, H. (2008). Inferred vertebrate bite marks on an Early Cretaceous unionoid bivalve from Lightning Ridge, Australia. *Alcheringa* **32**: 65-71.

Zammit, M., Daniels, C. B. and **Kear, B. P.** (2008). Elasmosaur neck flexibility: implications for hunting strategies. *Comparative Physiology and Biochemistry A* **150**: 124-130.

Kolesik, P., Sarfati, M.S., Brockerhoff, E.G. and Kelly, D. (2007). Description of *Eucalyptodiplosis chionochloae* sp. nov., a gall midge feeding on inflorescences of *Chionochloa* (Poaceae) in New Zealand. *New Zealand J. Zool.* **34**: 107-115.

Dennis, D. S. and **Lavigne, R. J.** (2007). Hymenoptera as prey of robber flies (Diptera: Asilidae) with new prey records. *Journal of the Entomological Research Society* **9**: 23-42.

Ghahari, H., **Lavigne, R.J.** and Geller-Grimm, F. (2007). Bibliography of Asilidae (Insecta: Diptera) 1996 - 2006. *Far Eastern Entomologist* **176**: 1- 39.

Ghahari, H., Lehr, P.A., **Lavigne, R.J.**, Hayat, R., and Ostovan, H. (2007). New records of robber flies (Diptera, Asilidae) for the Iranian fauna with their prey records. *Far Eastern Entomologist* **179**: 1- 9.

Sanders, K. L., **Lee, M. S. Y., Leijes, R. Foster, R.** and Keogh, J. Scott (2008) Molecular phylogeny and divergence dates for Australasian elapids and sea snakes (hydrophiinae): evidence from seven genes for rapid evolutionary radiations *Journal of Evolutionary Biology* **21**: 682-695.

McArthur, A.J. (2007). A key to *Camponotus* Mayr of Australia in *Advances in Ant Systematics. Homage to E. O. Wilson. R., R Snelling., B. L. Fisher and S. P. Cover Eds. Memoirs of the American Entomological Institute* **80**: 290 – 351.

McArthur, A.J. (2008). New species of *Camponotus* (Insecta: Hymenoptera: Formicidae) from Australia. *Annalen des Naturhistorischen Museums in Wien* **109B**: 111 – 129.

Mahoney, J.A., Smith, M.J. and **Medlin, G.C.** (2008). A new species of hopping-mouse, *Notomys robustus* sp. nov. (Rodentia: Muridae), from cave deposits in the Flinders and Davenport Ranges, South Australia. *Australian Mammalogy* **29**: 117-135.

Oliver, P, Hutchinson, M. and Hutchinson, R. (2007). Karyotypic variation in the Australian Gecko *Diplodactylus tessellatus*; with the description of a new karyotypic complement for diplodactyline geckos. *Journal of Herpetology* **41**: 540-543

- Oliver, P., Hutchinson, M. N. and Cooper, S. J. B.** (2007). Phylogenetic relationships in the lizard genus *Diplodactylus* Gray, 1832, and resurrection of *Lucasium* Wermuth, 1965 (Gekkota, Diplodactylinae). *Australian Journal of Zoology* **55**: 197-210.
- Oliver, P., Hutchinson, M. & Penck, D.** (2008). Notes on the biology of an undescribed *Lucasium* (Gekkonidae). *Herpetofauna* **37**: 90-91.
- Oliver, P., and Richards, S.J.** (2007) A new species of montane stream-dwelling *Litoria* from Papua, Indonesia (Anura: Hylidae). *Hamadryad* **31**: 299-303.
- Oliver, P., Richards, S.J.** Tjaturadi, B. and Iskandar, D.T. (2007) A new large green species of *Litoria* (Anura: Hylidae) from western New Guinea. *Zootaxa* **1519**: 17-26.
- Birch, W.D., Mills, S.J., Schwendtner, K., **Pring, A.**, Webb, J.A., Segnit, E.R. and Watts, J.A. (2007). Parwanite: a new hydrated Na-Mg-Al-phosphate from a lava cave at Parwan, Victoria, Australia. *Australian Journal of Mineralogy* **13**: 23-30.
- Buckley, A.N., Skinner, W.M., Harmer, S.L., **Pring, A.**, Lamb, R.N., Fen, L-J and Yang, Y. (2007). The proposition that Cu(II) can be required for charge neutrality in a sulfide lattice; Cu in tetrahedrites and sphalerite. *Canadian Journal of Chemistry* **85**: 767-781.
- Birch, W.D., Grey, I.E., Mills, S.J., Bougerol, C., **Pring, A.**, and Ansermet, S. Pittongite. (2007). A new secondary tungstate from Pittong, Victoria Australia. *Canadian Mineralogist*, **45**: 857-864.
- Liang, X., Yang, Y., Zhu. C., Yaun. S., Chen, G., **Pring, A.** and Xia, F. (2007). Luminescence properties of Tb³⁺-Sm³⁺ codoped glasses for white light emitting diodes. *Applied Physics Letters* **91**: 091104.
- Xia, F., Chen, G., **Pring, A., Brugger, J.**, Ngothai, Y., O'Neill, B., Colby, C., Tenailleau, C., Wang, H. and Yang, Y. (2007). Kinetics and mechanism of hydrothermal alteration from pentlandite to violarite. *Acta Geologica Sinica* **81**: No6: 1-12. (in chinese)
- Sung, Yoo-Hyun, Ciobanu, C.L., **Pring, A., Brugger, J.**, Skinner, W., Cook, N.J. and Nugus, M. (2007). Tellurides from Sunrise Dam gold deposit, Yilgarn Craton, Western Australia: a new occurrence of nagyágite. *Mineralogy and Petrology*, **91**: 249-270.
- Xia F, Zhuo, J, **Pring, A.**, Ngothai, Y., O'Neill, B., **Brugger, J.**, Chen, G. and Colby, C. (2007). The role of pyrrhotite (Fe₇S₈) and sample texture in the hydrothermal transformation of pentlandite ((Fe,Ni)₉S₈) to violarite ((Ni,Fe)₃S₄). *Reaction Kinetics and Catalysis letters* **92**: 257-266.
- Pring, A. and Ciobanu, C.L.** Chemical modulations in Pb-Bi-sulphosalts: A glimpse at minerals in solid-state chemistry (2007). In Harrison, K and Edwards P. (eds) *Turning points in Solid State and Surface Chemistry*. Royal Chemical Society special publications. 239-249.

- Baikie, T., Ferraris, C., Klooster, W.T., Madhavi, S., Pramana, S.S., **Pring, A.**, Schmidt, G, and White T.J. (2008). The crystal chemistry of minetite ($\text{Pb}_{10}(\text{AsO}_4)_6\text{Cl}_{1.48}\text{O}_{0.26}$) and finneanite ($\text{Pb}_{10}(\text{AsO}_3)_6\text{Cl}_2$) *Acta Crystallographica B64*: 34-41.
- Moëlo, Y., Makovicky, E., Mozgova, N.N., Cook, N. **Pring, A.**, Paar, W., Nickel, E.H., Graeser, S., Karup-Møller, S., Balic-zunic, T., Mumme, W.G., Vurro, F., Topa, D, Bindi, L. Bente, K and Shimizu, M. (2008) Sulfosalt Systematics: A Review Report of the Sulfosalt Sub-Committee of the IMA Commission on Ore Mineralogy. *European Journal of Mineralogy* **20**: 7-46.
- Pring, A.**, Tarantino, S., Tenailleau, C., Etschmann, B., Carpenter, M.A, Zhang, M., Liu, Y. and Withers, R.L. (2008). The crystal chemistry of Fe-bearing sphalerites: An infrared spectroscopic study *American Mineralogist* **93**: 591-597.
- Pewkliang, B., **Pring, A.** and **Brugger, J.** (2008). The formation of precious opal: clues from the oplaisation of bone. *Canadian Mineralogist*, **46**:139-149.
- Polhemus, D.A., Michalski, J. and **Richards, S.J.** (2008). *Pseudagrion fumipennis*, a remarkable new species of damselfly from New Guinea (Odonata: Zygoptera: Coenagrionidae). *Tijdschrift voor Entomologie*. **151**: 51-56.
- Richards, S.J.** (2007). A new species of *Nyctimystes* (Anura, Hylidae) from Papua New Guinea and comments on poorly-known members of the genus. *Phyllomedusa – Journal of Herpetology* 105-118.
- Alford, R.A., Bradfield, K.S and **Richards S.J.** (2007). Global warming and amphibian losses. *Nature* **447**: 3-4.
- Rösler H., **Richards, S.J.** and Günther, R. (2007). Remarks on morphology and taxonomy of geckos of the genus *Cyrtodactylus* GRAY, 1827, occurring east of Wallacea, with descriptions of two new species (Reptilia: Sauria: Gekkonidae). *Salamandra* **43**: 193-230.
- Foufopolous, J. and **Richards, S.J.** (2007). Amphibians and reptiles of New Britain Island, Papua New Guinea: diversity and conservation status. *Hamadryad* **31**: 176-201.
- Richards, S.J.**, Mack, A.L. and Austin, C.C. (2007). Two new species of *Platymantis* (Anura: Ceratobatrachidae) from the Admiralty Archipelago, Papua New Guinea. *Zootaxa* **1639**: 41-55.
- Richards, S.J.** (2007) A new species of ‘spike-nosed’ frog from northern New Guinea (Anura: Hylidae: *Litoria*). *Zootaxa* **1525**: 51-59.
- Theischinger, G. and **Richards, S.J.** (2007). *Teinobasis kiautai* spec. nov., a new species from Papua New Guinea (Zygoptera: Coenagrionidae). *Odonatologica* **36**: 85-88.

- Rose A.** (2008). Internships Abroad: Taking the Initiative. *Australasian Registrars Committee Journal arc-journal-56*:14-17.
- Guzinski J., **Saint K.M.**, Gardner M.G., **Donnellan S.C.**, Bull C.M. (2008). Development of microsatellite markers and analysis of their inheritance in the Australian reptile tick, *Bothriocroton hydrosauri*. *Molecular Ecology Resources* **8**: 443–445.
- Shaughnessy, P. D.** (2007). Seabird islands No. 250: Lilliput Island (Small North-east Franklin Islet), Eyre Peninsula, South Australia. *Corella* **31**: 83-84.
- Shaughnessy, P.** and Dennis, T. (2007). Seabird islands No. 251: Nicolas Baudin Island, Eyre Peninsula, South Australia. *Corella* **31**: 85-86.
- Shaughnessy, P. D.**, Dennis, T. and Berris, M. (2007). Predation on Australian sea lions *Neophoca cinerea* by white sharks *Carcharodon carcharias* in South Australia. *Australian Mammalogy* **29**: 69-75.
- Shaughnessy, P. D.**, Nicholls, A. O. and Briggs, S. V. (2008). Do tour boats affect fur seals at Montague Island, New South Wales? *Tourism in Marine Environments* **5**: 15-27.
- Shaughnessy, P.D.**, Dennis, T. and Armstrong, D. (2008). Seabird islands: West Waldegrave Island, Eyre Peninsula, South Australia. *Corella* **32**: 20-21.
- Shaughnessy, P.D.**, Dennis T., Armstrong, D. and Berris, S. (2008). Land-birds of three islands off the west coast of Eyre Peninsula, South Australia: Lilliput, Nicolas Baudin and West Waldegrave *Corella* **32**: 17-19.
- Smales L R** (2007).. Oligacathoryhynchidae (Acanthocephala) mammals from Paraguay with the description of a new species of *Neonicola*. *Comparative Parasitology* **74**: 237-243.
- Smales L.R.**, Sasal, P. and Taraschewski, H. (2007). *Acanthocephalus reunionensis* n. sp. (Acanthocephala: Echinorhynchidae), a parasite of *Anguilla* species (Anguillidae) from Reunion Island. *Parasite* **14**:131-134.
- Wells, K., **Smales, L.**, Kalko, E. and Pfeiffer, M. (2007). Impact of rainforest logging on helminth assemblages in small mammals (Muridae, Tupaiidae) from Borneo. *Journal of Tropical Ecology* **23**: 35-43.
- Smales, L. R.** (2008). New species of Heligmonellidae (Nematoda: Trichostrongyloidea) from *Melomys*, *Paramelomys* and *Uromys* (Rodentia: Muridae) from Papua, Indonesia and Papua New Guinea. *Comparative Parasitology* **75**: 52-60.
- Fenner, A.L., **Smales, L.R.** and Bull. C.M. (2008). *Pharyngodon wnadillahensis* n.sp. (Nematoda: Pharyngodonidae) from the endangered pygmy bluetongue lizard *Tiliqua adelaidensis* Peters, 1863 (Sauria: Scincidae), South Australia, Australia. *Comparative Parasitology* **75**: 69-75.

- Barnett L.J., **Smales L.R.** and Cribb T.H. (2008). A complex of putative acanthocolpid cercariae (Digenea) from *Nassarius olivaceus* and *N. dorsatus* (Gastropoda: Nassariidae) in Central Queensland, Australia. *Zootaxa* **1705**: 21-39.
- Weaver H.J. and **Smales L.R.** (2008). New species of *Syphacia* (*Syphacia*) *Seuarat* (Nematoda: Oxyuridae) from *Pseudomys* species (Rodentia: Muridae) from central Australia. *Zootaxa* **1775**: 39-50.
- Sutton, Peter** (2007). Norms, statistics, and the Jango case at Yulara. *Anthropological Forum* **17**: 175-192.
- Sutton, Peter** and Harold Koch (2008). Australian languages: a singular vision. *Journal of Linguistics* **44**:471-504.
- Wheaton L., Donnellan S.C.,** De Vries M.C., Gardner M.G., Gillanders B.M. (2007). Isolation of additional polymorphic tri- and tetra-nucleotide microsatellite loci for the giant Australian cuttlefish (*Sepia apama*) *Molecular Ecology Notes* **7**: 893-5.
- Wheaton L., Donnellan S.C.,** Gardner M.G., Hollis G. (2008). Isolation of polymorphic tri- and tetra-nucleotide microsatellite loci for the highly endangered Baw Baw frog (*Philoria frosti*). *Molecular Ecology Resources* **8**: 593-5.
- Glennon V., Chisholm L.A. and **Whittington I.D.** (2007). Experimental infections, using a fluorescent marker, of two elasmobranch species by unciliated larvae of *Branchotentes octohamatus* (Monogenea: Hexabothriidae): invasion route, host specificity and post-larval development. *Parasitology* **134**: 1243-1252.
- Chisholm L.A. and **Whittington I.D.** (2007). Review of the Capsalinae (Monogenea: Capsalidae). *Zootaxa* **1559**: 1-30.
- Hutson K.S., Ernst I. and **Whittington I.D.** (2007). Risk assessment for metazoan parasites of yellowtail kingfish *Seriola lalandi* (Perciformes: Carangidae) in South Australian sea-cage aquaculture. *Aquaculture* **271**: 85-99.
- Williams R.E., Ernst I., Chambers C.B. and **Whittington I.D.** (2007). Efficacy of orally administered praziquantel against *Zeuxapta seriolae* and *Benedenia seriolae* (Monogenea) in yellowtail kingfish *Seriola lalandi*. *Diseases of Aquatic Organisms* **77**: 199-205.
- Kearn G.C., **Whittington I.D.** and Evans-Gowing R. (2007). A revision of *Entobdella* Blainville in Lamarck, 1818, with special emphasis on the nominal (type) species "*Entobdella hippoglossi* (Müller, 1776) Blainville, 1818" (Monogenea: Capsalidae: Entobdellinae) from teleost flatfishes, with descriptions of three new species and a new genus. *Zootaxa* **1659**: 1-54.

3.4 Other publications (book reviews, conference proceedings etc.)

Izzo, C. and **Bertozi, T.** (2007). Elasmobranch research in South Australia. *Oceania Chondrichthyan Society Newsletter* **7**: 5.

Reith, F., Rogers, S.L., McPhail, D.C. 'Bear' and **Brugger, J.** (2007): Potential for the utilisation of micro-organisms in gold processing. Gold 2007 Conference, Cairns, QLD, Australia, 22 - 24 October 2007.

Chisholm, L. and **Whittington, I.** (2007). The Capsalinae (Monogenea: Capsalidae): a conundrum of questionable characters. Published abstract of an oral presentation at the 7th *International Symposium on Fish Parasites* held in Viterbo, Italy, September 24-28 2007. *Parassitologia* **49**: 13.

Craig, B. (2007). Review of *Creative Spirits: Bark Painting in the Washkuk Hills of Northern New Guinea*, by Ross Bowden; Melbourne: Oceanic Art Pty Ltd, 2006. *Oceania* **77**,3: 376-8.

Sorokin, S., **Laperousaz, T.** and Drabsch, S. (2007). A catalogue of shallow-water sponges from the Investigator Islands, South Australia" Report to Nature Foundation SA Inc. SARDI Publication Number F2007/000789-1. SARDI Research Report Series Number **258**.

Kinloch M. A., Brock D. J., Kirkman H. and **Laperousaz T.** (2007). *Seagrass biodiversity on Kangaroo Island*. KI NRM Board Coast and Marine Program Report No. **CMP07/004**.

Pring, A. and Birch, W.D. (2008) Guest Editorial. *Australian Journal of Mineralogy*, **13**: 3.

Parra, G., R. Brown, J. Hanken, B. Hedges, R. Heyer, S. Kuzmin, E. Lavilla, S. Lötters, B. Pimenta, **S. Richards**, M.O. Rödel, R.O. de Sá and D. Wake. (2007). Systematics and Conservation. Pp. 45–48 *In*: Gascon, C., J P. Collins, R. D. Moore, D. R. Church, J. E. McKay and J. R. Mendelson III (Eds.) Amphibian Conservation Action Plan. IUCN/SSC Amphibian Specialist Group. Gland, Switzerland and Cambridge, UK. 64pp.

Goldsworthy, S. D., **Shaughnessy, P. D.**, Page, B., Dennis, T. E., McIntosh, R. R., Hamer, D., Peters, K. J., Baylis, A. M. M., Lowther, A. and Bradshaw, C. J. A. (2007). Developing population monitoring protocols for Australian sea lions. Final report to the Department of the Environment and Water Resources. SARDI Aquatic Sciences Publication Number F2007/000554. SARDI Research Report Series No: 219. 75 pp.

Shaughnessy, P. D. and Goldsworthy, S. D. (2007). Population assessment of fur seals and sea lions at some colonies in South Australia, 2006-07. Final report to the Department for Environment and Heritage, South Australia and the South Australian Wildlife Conservation Fund. SARDI Aquatic Sciences Publication Number: F2007/000750-1. SARDI Research Report Series Number: 236. 43 pp.

Goldsworthy, S. D., **Shaughnessy, P. D.**, McIntosh, R. R. and Page, B. (2007). A population monitoring and research program to assist management of the Australian sea lion population at Seal Bay Conservation Park, Kangaroo Island. Final report to the South Australian Nature Foundation. SARDI Aquatic Sciences Publication No. F2007/000913-1. SARDI Research Report Series No: 241. i + 45 pp.

Goldsworthy, S. D., Lowther, A., **Shaughnessy, P. D.**, McIntosh, R. R. and Page, B. (2007). Assessment of pup production and the maternal investment strategies of the Australian sea lion *Neophoca cinerea* at Dangerous Reef in the 2006-07 breeding season. Report to the Department for the Environment & Heritage, Wildlife Conservation Fund South Australia. SARDI Aquatic Sciences Publication No. F2007/000929-1. SARDI Research Report Series No: 249. i + 58 pp.

Tzioumis, V. and **Shaughnessy, P.D.** (2007). Seals/Dugong. Chapter 11 in 'Description of Key Species Groups in the East Marine Planning Region'. Eds Tzioumis, V. and Keable, S. Consultancy report to East Marine Planning Section, Department of the Environment and Water Resources. (Australian Museum: Sydney).

Shaughnessy, P.D. (2008). Population assessment of fur seals and sea lions at some colonies in South Australia, 2007-08. Report to Department for Environment and Heritage, South Australia and the South Australian Wildlife Conservation Fund. 43 pp., May 2008.

Sutton, Peter (2007). The unwavering eye: David McKnight's ethnographic-historical legacy. Review article. *The Australian Journal of Anthropology* **18**: 227-230.

Sutton, Peter (2007). Commentary on Thuuth Thaa'-munth. Brochure article. In *Wik Ceremonial Law Poles*, Brisbane: Queensland Indigenous Arts Marketing and Export Agency. Distributed at the ceremonial handover of the Wik ceremonial law poles to the Aboriginal Art Gallery in Utrecht, Netherlands, October 2007.

Sutton, Peter, and Joanna Bosse (2007). *Puulway: Wik and Kugu Totems. Contemporary Australian Sculpture from Aurukun* [catalogue]. Melbourne: Gallery Gabrielle Pizzi.

Hutson K.S. and **Whittington I.D.** (2007). Blood flukes infecting wild yellowtail kingfish (*Seriola lalandi*) and Samson fish (*S. hippos*): Implications for *Seriola* aquaculture in Australasia. Published abstract of an oral presentation at the 7th *International Symposium on Fish Parasites* held in Viterbo, Italy, September 24-28 2007. *Parassitologia* **49**: 61.

Kearn G.C., **Whittington I.D.** and Evans-Gowing R. (2007). Discrimination of allegedly indistinguishable *Entobdella* species (Monogenea: Capsalidae: Entobdellinae) using morphology. Published abstract of an oral presentation at the 7th *International Symposium on Fish Parasites* held in Viterbo, Italy, September 24-28 2007. *Parassitologia* **49**: 91.

Perkins E.M., **Whittington I.D.**, Chisholm L.A. and **Donnellan S.C.** (2007). *Neobenedenia 'melleni'* (Monogenea: Capsalidae): novel mitochondrial genes to

unravel the mystery of the taxon. Published abstract of an oral presentation at the 7th *International Symposium on Fish Parasites* held in Viterbo, Italy, September 24-28. *Parassitologia* **49**: 97.

Justine J.-L., Beveridge I., Boxshall G.A., Bray R.A., Chauvet C., Euzet L., Moravec F., Trilles J.-P. and **Whittington I.D.** (2007). Parasites of groupers (Serranidae, Epinephelinae) off New Caledonia, South Pacific. Published abstract of a poster presentation at the 7th *International Symposium on Fish Parasites* held in Viterbo, Italy, September 24-28. *Parassitologia* **49**: 303.

Justine J.-L., Beveridge I., Boxshall G.A., Bray R.A., Euzet L., Lim L.H.S., Moravec F. and **Whittington I.D.** (2007). Parasites of emperors (Lethrinidae) off New Caledonia, South Pacific. Published abstract of a poster presentation at the 7th *International Symposium on Fish Parasites* held in Viterbo, Italy, September 24-28. *Parassitologia* **49**: 304.

Glennon V., Perkins E.M., Chisholm L.A. and **Whittington I.D.** (2007). Hexabothriid, microbothriid and monocotylid Monogenea from *Trygonorrhina fasciata* (Rhinobatidae) in South Australia: are these parasites host-specific, or can other rhinobatids extend their geographic range? Published abstract of an oral presentation at the 7th *International Symposium on Fish Parasites* held in Viterbo, Italy, September 24-28 2007. *Parassitologia* **49**: 315.

4. STAFF LIST 1.7.07 – 30.6.08

DIRECTORATE

DIRECTOR

S. Miller, B.Sc., Ph.D

GENERAL MANAGER

S. Riley, B.A.(Hons) from Feb 2008

HEAD OF DEVELOPMENT

BUSINESS MANAGER

P. Kidd, Adv. Dip. Bus Mgt

IT NETWORK & SYSTEMS

MANAGER

Simon Reiter

OHSW COORDINATOR

Brent Collett

DIRECTOR'S PERSONAL ASSISTANT

V. Gleeson

GENERAL MANAGER'S EXECUTIVE ASSISTANT

D.Veitch(from Feb 2008) EXECUTIVE ASSISTANT TO HEAD OF DEVELOPMENT

STORES/TRANSPORT OFFICERS

S. Perkins

M. Birch

MARKETING SECTION

PUBLICITY AND PROMOTIONS OFFICER

C. Savage, B.A. (Hons)

MARKETING ASSISTANTS

A. Faulkner (left October 07)

J. Evans (left December 07)

J. Smith

VENUE FACILITIES COORDINATOR

A. Ferrari

HEAD OF PUBLIC PROGRAMS DEVELOPMENT

M. Judd, S.Sc., Grad.Dip.T.

ADMINISTRATIVE COORDINATORS

K. Tucker

K. Ross

MANAGER, PROGRAMS AND EVENTS

T. Gilchrist, B.A., Grad Dip Comm (PR)

EDUCATION & VISITOR SERVICES MANAGER, EDUCATION & VISITOR SERVICES

R. Glow (left May 2008)

SENIOR EDUCATION OFFICERS

S. Langsford, B.Sc., Grad Dip.T., Grad.Dip.Ed.Admin

C. Nobbs, Adv.Dip.T

S. Morris - Dip T

L Underwood – Bachelor of Teaching and a Bachelor of Education

COORDINATOR, EDUCATION AND CHILDREN'S SERVICES

C. Ferreira

SCHOOL HOLIDAY PROGRAM ASSISTANTS

T. Dauginas

S. Fraser

.R. Handrickan

V.Keetch

T. Mallamo

C. Burke

SENIOR CULTURAL INSTRUCTOR

B. McKenzie

SUPERVISOR, DISCOVERY CENTRE

M. Gemmell

DEVELOPMENT & DESIGN MANAGER, DEVELOPMENT & DESIGN

D. Kerr, B.Ed.(Hons), B.A.

DISCOVERY CENTRE ASSISTANT

C. Burke

SENIOR EXHIBITION OFFICER

I.R. Maidment, B.A., Dip.T.(Art)

EXHIBITIONS OFFICER

A. Guy

B. Parnell

EXHIBITIONS ASSISTANT
B. Blesing, B.A. Visual Arts
J. Cariotis, still undertaking studies
Rebecca Hartman Kearns, B. A. Visual
Arts (Hons.)
B. Minuzzo, B. A Vis Arts
R. Moore, Advanced Diploma Applied
and Visual. Arts

SUPERVISOR, MULTIMEDIA &
IMAGING
T. Peters, B A. Fine Art

SUPERVISOR 3D DESIGN
J. Bain

INDIGENOUS SERVICES
INFORMATION OFFICERS
S. Agius
M. Clancy

SCIENCE

HEAD OF SCIENCE
R. Hill, BSc(Hons),Ph.D.,DSc., FAI.Biol,
FLS

MANAGER OF SCIENCE
P. Clarke, B.Sc., BA. PhD.

PERSONAL ASSISTANT TO HEAD OF
SCIENCE & MANAGER OF SCIENCES
L. Strefford

HEAD OF COLLECTIONS
R. Morris, B.A.(Hons), M.Soc.Sci.

DEPUTY HEAD OF COLLECTIONS
K. Walshe

ADMIN. COORDINATORS
D. Churches (part-time)
N. Mladenovic

INFORMATION MANAGEMENT

LIBRARY
LIBRARY SERVICES OFFICER
J. Evans

ARCHIVES
INFORMATION MANAGEMENT
MANAGER
F. Zilio, B.A., MIMS

ARCHIVES COLLECTION MANAGER
L. Gardam

FAMILY HISTORY ACCESS OFFICER
A. Abdullah-Highfold

ANTHROPOLOGY
HEAD OF ANTHROPOLOGY
P. Clarke, B.Sc., B.A., Ph.D.

SENIOR RESEARCHER
AUSTRALIAN ETHNOLOGY
P. Jones, L.L.B., B.A.(Hons), Ph.D.

ABORIGINAL COLLECTIONS
SENIOR PROJECT OFFICER:
I. James

FOREIGN ETHNOLOGY
RESEARCHER
B. Craig, B.A.(Hons), Dip.Ed.,
M.A.(Hons), Ph.D.

SENIOR COLLECTION MANAGER
ABORIGINAL COLLECTIONS &
ARCHAEOLOGY
K. Walshe

COLLECTION MANAGER,
ABORIGINAL ARCHAEOLOGY
G. Toone

COLLECTION MANAGER
FOREIGN ETHNOLOGY
A. Rose, B.A., Grad.Dip.Mus.St. M.A.

ASSISTANT COLLECTION MANAGER
T.Dodd

HEAD OF EARTH SCIENCES
A. Pring, B.Sc. (Hons), Ph.D., FMSA, F
Min Soc

SENIOR RESEARCHER
J. Brugger, B.Sc.(Hons), Ph.D.
M. Lee, B.Sc.(Hons), Ph.D.
J. Gehling, Ph.D., M.Sc., B.Sc.(Hons)

SENIOR COLLECTION MANAGER,
B. McHenry, B.Sc.(Hons), M.Sc.

COLLECTION MANAGER
J. McNamara, B.Sc.(Hons)

ASSISTANT COLLECTION MANAGER
D. Rice (part-time)

BIOLOGICAL SCIENCES

HEAD OF BIOLOGICAL SCIENCES
S. Cooper, B.Sc (Hons), Ph.D

TERRESTRIAL INVERTEBRATES

ENTOMOLOGY
SENIOR COLLECTION MANAGER
J. Forrest OAM, Assoc. Dip. Photography

COLLECTION MANAGER
P.Hudson, PhD (Flinders)

ARACHNOLOGY
COLLECTION MANAGER
D. Hirst

ASSISTANT COLLECTION MANAGER
C. Lee

DATABASING PROJECT
J. Wood
J. Moore

PARASITOLOGY
PRINCIPAL RESEARCHER
I. Whittington B.Sc.(Hons) Ph.D.

RESEARCH ASSOCIATE
L. Chisholm B.Sc., M.Sc., PhD.

COLLECTION MANAGER
D. Stemmer, B.Sc. (part-time)

MARINE INVERTEBRATES
COLLECTION MANAGER
T. Laperousaz B.Sc (Hons)

COLLECTION MANAGER
R. Hamilton Bruce, A.I.A.T., A.B.P.I.,
Dip. Graph.Dsgn.

ASSISTANT COLLECTION MANAGER
C. Lee

VERTEBRATES

HERPETOLOGY
SENIOR RESEARCHER
M. Hutchinson, B.Sc.(Hons), Ph.D.

RESEARCHER
S. Richards , BA

COLLECTION MANAGER
C. Kovach

ICHTHYOLOGY
COLLECTION MANAGER
R.Foster (part time)

MAMMALOLOGY
RESEARCHER
C. Kemper, B.Sc., Ph.D.

COLLECTION MANAGER
D. Stemmer, B.Sc. (part time)

RESEARCH ASSISTANT
M. McDowell B.Sc.,(Hons), M.Sc.

TECHNICAL OFFICER
T. Reardon, Cert.Sc.Tech.

ORNITHOLOGY
SENIOR COLLECTION MANAGER
P. Horton, B.Sc.(Hons), Ph.D.

COLLECTION MANAGER
M. Penck B.Sc.(Hons)

ASSISTANT COLLECTION MANAGER
D. Churches (part time)

EVOLUTIONARY BIOLOGY

HEAD OF EBU/PRINCIPAL
RESEARCHER
S. Donnellan, B.Sc.(Hons), Ph.D

SENIOR RESEARCHER
M. Adams, B.Sc. (Hons)
S. Cooper, B.Sc.(Hons), Ph.D

RESEARCHER
L. Wheaton

PRINCIPAL TECHNICAL OFFICERS
T. Bertozzi, B.Sc. (Hons), PhD
K. Saint

TECHNICAL OFFICERS

T. Reardon, Cert.Sc.Tech.
R. Foster (part-time)

HONORARY RESEARCH

ASSOCIATES

A. Austin BSc, Ph.D.(Evolutionary Biology)
S. Barker, Ph.D. (Entomology)
D. Barton, Ph.D (Parasitology)
I. Beveridge, BSc, Ph.D.
A. Black, Ph.D. (Ornithology)
D. Corbett, Ph.D. (Mineralogy)
C. Daniels, B.Sc., Ph.D. (Palaeo)
L.Gershwin, B.Sc.,PhD. (Parasitology)
P. Greenslade (Entomology)
G. Gross, B.Sc., M.Sc., D.Sc. (Curator Emeritus, Entomology)
M. Halt, B.Sc. Hons. (Marine Invertebrates)
M.Hammer, B.Sc.,(Hons), PhD. (Ichthyology)
J. Jago BSc,Jons, PhD, F. Aus.I.M.M. (Palaeo)
R. Jenkins, B.Sc. (Hons), Ph.D. (Palaeo)
G.R. Johnston (Evolutionary Biology and Biodiversity)
B. Kear, PhD. (Palaeontology)
P. Kolesik, Ph.D. (Entomology)
R. J. Lavigne, Ph.D. (Entomology)
C. Madden, B.Sc.M. Env.St(Entomology)
E. Matthews, B.A., Ph.D. (Entomology)
G. Medlin, B.Sc., Dip.T. (Mammalogy)
A. J. McArthur, OAM, B.E. (Entomology)
M. O'Donoghue, B.Ed., Grad Dip Rel Ed. M.Ed. (Foreign Ethnology)
N. Pledge, B.Sc. (Hons), M.Sc. (Curator Emeritus, Palaeo)
G. Prideaux, B.Sc (Hons), Ph.D (Palaeo)
L. Reed, BA (Hons), PhD
T. Schultze-Westrum, Thomas, PhD (Foreign Ethnology)
P. Shaughnessy, BSc (Hons), MSc, Ph.D. (Mammalogy)
S. Shepherd, B.A., Ll.B., M.Env.St.,Ph.D., (Marine Invertebrates)
M. Snow, B.0Sc., Ph.D. (Mineralogy)
M. Tyler AO, M.Sc., (Herpetology)
Lesley Warner, B.Sc(Parasitology)
C. Watts, B.Sc.(Hons), PhD. (Entomology)
Prof. R. Wells B.Sc.(Hons) Ph.D. (Palaeo)
W. Zeidler, B.Sc.(Hons) M.Sc. Ph.D (Marine Invertebrates)

5. HUMAN RESOURCES

Management of Human Resources

Details of employment at SA Museum as at June 30 2008 are provided in the tables below.

Employee Numbers, Gender and Status

Total Number of Employees	
Persons	84
FTEs	74.69

Gender	% Persons	% FTEs
Male	54.76	56.78
Female	45.24	43.22

Number of Persons During the 07/08 Financial Year	
Separated from the agency	14
Recruited to the agency	31

Number of Persons at 30 June 2007	
On Leave without Pay	3

Number Of Employees By Salary Bracket

Salary Bracket	Male	Female	Total
\$0 - \$43,999	12	18	30
\$44,000 - \$56,999	14	12	26
\$57,000 - \$72,999	8	6	14
\$73,000 - \$91,999	8	1	9
\$92,000+	4	1	5
TOTAL	46	38	84

Status Of Employees In Current Position

FTEs	Ongoing	Short-Term Contract	Long-Term Contract	Other (Casual)	Total
Male	32.1	6	3.2	1.11	42.41
Female	21.8	5.5	2.7	2.28	32.28
TOTAL	53.9	11.5	5.9	3.39	74.69

PERSONS	Ongoing	Short-Term Contract	Long-Term Contract	Other (Casual)	Total
Male	33	6	4	3	46
Female	24	6	3	5	38
TOTAL	57	12	7	8	84

Executives

Number of executives by gender, classification and status in current position

Classification	Ongoing		Contract Tenured		Contract Untenured		Total	
	Male	Female	Male	Female	Male	Female	Male	Female
Exec A					1		1	
Exec B						1		1
Total					1	1	1	1

Leave management

Average days leave taken per full time equivalent employee

Leave Type	2004-05	2005-06	2006-07	2007-08
Sick Leave	3.64	5.23	5.42	4.59
Family Carer's Leave	0.22	0.47	0.45	0.78
Special Leave with Pay	1.91	0.78	0.73	0.36

Workforce Diversity

Age Profile

Age Bracket	Male	Female	Total	% of Total
15-19		1	1	1.19
20-24	2	1	3	3.57
25-29	4	6	10	11.9
30-34	3	2	5	5.95
35-39	1	4	5	5.95
40-44	6	4	10	11.9
45-49	5	3	8	9.52
50-54	12	12	24	28.57
55-59	7	3	10	11.9
60-64	4	2	6	7.14
65+	2	0	2	2.38
TOTAL	46	38	84	100%

Note: Provision of the information reported in the following three tables is voluntary, therefore the figures provided may not fully reflect the diversity of our workforce.

Aboriginal And/Or Torres Strait Islander Employees

Male	Female	Total	% of Agency	Target*
2	3	5	5.95	2%

* Target from South Australia's Strategic Plan

Cultural And Linguistic Diversity

	Male	Female	Total	% Agency
Number of employees born overseas	9	5	14	16.67
Number of employees who speak language(s) other than English at home	0	1	1	1.19

Number Of Employees With Ongoing Disabilities Requiring Workplace Adaptation

Male	Female	Total	% of Agency
1		1	1.37

Voluntary Flexible Working Arrangements

Number Of Employees Using Voluntary Flexible Working Arrangements By Gender

	Male	Female	Total
Purchased Leave			
Flexitime	31	24	55
Compressed Weeks	1	0	1
Part-time Job Share	1	1	2
Working from Home	3	0	3

Performance Management

Documented Review Of Individual Performance

Employees with ...	% Total Workforce
a plan reviewed within the past 12 months	99.7
a plan older than 12 months	0

Documented Individual Performance Development Plan

Employees with ...	% Total Workforce
a plan set within the past 12 months	
a plan older than 12 months	

Training Expenditure

As a percentage of total remuneration expenditure

TRAINING EXPENDITURE

Training and Development	Total Cost	% of Total Salary Expenditure
Total training and development expenditure	\$7,218.40	0.18%
Total leadership and management development expenditure	\$705.00	0.02%

ACCREDITED TRAINING PACKAGES BY CLASSIFICATION

Classification	Number of Accredited Training Packages
OPS4	1

6. OCCUPATIONAL HEALTH, SAFETY AND INJURY MANAGEMENT (OHS&IM)

Key achievements:

The Museum has continued its endeavours to engender a positive safety culture throughout all areas of its operations. Continuing an improvement program identified through the 2007 Workcover Gap Analysis key achievements during the reporting period are as follows:-

- In March 2008 the South Australian Museum, with the financial assistance of ArtsSA, employed an OHS&W Coordinator to address the issues identified in the 2007 WorkCover Gap Analysis and to build the South Australian Museum (SAM) OHS&W system in conjunction with the DPC OHS&W and Injury Management system to achieve compliance with “Performance standards for self-insurers”.
- Purchased 2 defibrillator units, located in the Museum’s public areas.
- Nomination and appointment of a staff Health and Safety Representative occurred.
- The hazard management process has identified hazards at all SAM properties, controls to reduce or eliminate the associated risks have been implemented.
- Training needs have been identified.
- Training providers have been sourced and a training program is being developed.
- Internal policies and procedures have been reviewed or created.

OCCUPATIONAL HEALTH, SAFETY AND WELFARE AND INJURY MANAGEMENT REPORT.

The South Australian Museum performance against the elements of Safety In the Public Sector 2007-2010 is tabled below:

1. SUSTAINABLE COMMITMENT				
Strategy	Action	Performance indicator	Responsibility	Status
1.1 Strategies to promote zero harm vision	OHS&W awareness training for all new employees	100% of new employees received induction.	Managers	100% have received training
1.2 Implementation of DPC OHS&W&IM system	OHS&W awareness training for all employees, volunteers and students	100% of employees receive training.	OHS&W Coordinator	Ongoing 100% have received information. 25% have received training
1.3 OHS&W awareness	Inclusion of OHS&W in meetings agendas	100% of meetings to include OHS&W	Managers	Ongoing
2. FINANCIAL ACCOUNTABILITY				
2.1 OHS&W training needs identified	Training needs analysed	Training programs planned	OHS&W Coordinator	Ongoing
2.2 Identify purchases required as corrective actions	Purchase of required equipment/tools/items on a priority basis	Required equipment/tools/items purchased	Business Manager OHS&W Coordinator	Ongoing
3. INTEGRATED RISK MANAGEMENT				
3.1 Adopt hazard management principals to control risk	Maintain records and identify controls to be implemented to minimise risk	80% of controls implemented	OHS&W Committee OHS&W Coordinator	Ongoing, funding limitations prevent 100% compliance. Risks are managed
4. RIGOROUS EVALUATION				
4.1 Work place inspections	Work place inspections are programmed	100% of programmed WPI's occur	OHS&W Coordinator	Ongoing, 100% of scheduled inspections have been conducted
4.2 Review internal policies and procedures	Create document register incorporating review dates	Internal policies and procedures reviewed	OHS&W Committee OHS&W Coordinator	Document register has been created. Policies and procedures have been reviewed
4.3 Create internal policies and procedures.	Identify internal policies and procedures required by SAM	Internal policies and procedures required by SAM have been created	OHS&W Committee OHS&W Coordinator	Internal policies, procedures and forms have

				been created in consultation with stakeholders
4.4 Internal audits conducted	Internal audits program is established	100% of programmed audits are conducted	OHS&W Coordinator	Ongoing, 100% of scheduled audits have been conducted

Table 1 OHS Notices and Corrective Actions taken

Number of notifiable occurrences pursuant to OHS&W Regulations Division 6.6	0
Number of notifiable injuries pursuant to OHS&W Regulations Division 6.6	0
Number of notices served pursuant to OHS&W Act s35, s39 and s40 (default, improvement and prohibition notices)	0

Table 2: Agency gross workers compensation expenditure for 2007-08 compared with 2006-07

EXPENDITURE	2007-08 (\$m)	2007-08 (\$m)	Variation (\$m) +	%Change +(-)
Income maintenance	0	0	0	0
Lump Sum Settlements Redemptions – Sect.42	0	0	0	0
Lump Sum Settlements Permanent Disability – Sect.43	0	0	0	0
Medical/Hospital Costs combined	0	0	0	0
Other	0	0	0	0
Total Claims Expenditure	0	0	0	0

Successful consultative arrangements within the South Australian Museum include:

INTERNAL STAKEHOLDERS	CORPORATE STAKEHOLDERS	EXTERNAL STAKEHOLDERS
Employees	ArtsSA; ACCC	Adelaide University
Health and Safety Committee	DPC; DPCCC	Spotless Maintenance Contractors
Health and Safety Representative	DPC; Workplace Safety and Well Being Unit	Menzies Cleaning Contractors
Volunteers and Students		Wilson Security

Disability Action Plan

The Museum continues to work with Arts SA on monitoring its visitor services for disability access.

The Museum receives regular visitors to its galleries from people with a range of disabilities and special needs. Museum staff also respond to specific requests for specially designed group tours and experiences.

All exhibition and gallery development takes into account consideration of access and egress and disabled parking is available at the rear of the Museum for cars and vans.

The Museum awaits the results of a Disability Gap Analysis that was completed for the SA Museum, Science Centre, Old Armoury and Police Barracks buildings in June this year.

Equal Employment Opportunity Programs

As an EEO employer, the South Australian Museum is committed to employing on merit regardless of race, gender, sexuality, marital status, age, pregnancy or disability for all positions within the organisation. This is supported by the Museum's diverse workforce profile.

Overseas Travel 2007-08

Number of Employees	Destination/s	Reason for Travel	Total Cost to Agency
1	Sheffield, UK	ARC Linkage International Grant. Study new technical and analytical expertise in genetic marker development in the field of Molecular Ecology and Evolution	\$10,815
1	France	Presentation of paper at Pacific Arts Association 9 th International Symposium of The Pacific Gallery at the SA Museum	\$5,575
1	New Zealand	Attended grant assessment panel for the Marsden Fund	\$2,076
1	Cape Town	Present scientific papers at biennial conference on the biology of marine mammals. Undertake research of museum collection in Cape Town and Port Elizabeth	\$8,286
1	New Zealand	Attend workshop and undertake research as part of project in the Australasian region.	\$1,500
1	Antarctica	Guest lecturer on expedition ship to Mawsons Hut.	\$4,700
1	Oxford, UK	Internship at Pitt Rivers Museum, Oxford UK – to investigate curatorial/collection management processes.	\$12,080
1	UK	ARC Linkage International Grant. Study new technical and analytical expertise in genetic marker development in the field of	\$8,279

		Molecular Ecology and Evolution	
1	Italy	Attending International Symposium on Parasitology	\$1,700
1	New Zealand	Attend the Council of Museum Directors Conference	\$2,590
		TOTAL	57,601

ASBESTOS REPORT

Priority and Removal Activities

South Australian Museum: ANNUAL ASBESTOS MANAGEMENT REPORT, 2007-08				
Category	Number of Sites		Category Description	Interpretation One or more item(s) at these sites...
	At start of year	At end of year		
1	0	0	Remove	should be removed promptly.
2	1	1	Remove as soon as practicable	should be scheduled for removal at a practicable time.
3	1	0	Use care during maintenance	may need removal during maintenance works.
4	0	1	Monitor condition	has asbestos present. Inspect according to legislation and policy
5	0	0	No asbestos identified / identified asbestos has been removed	(All asbestos identified as per OHS&W 4.2.10(1) has been removed)
6	0	0	Further information required	(These sites not yet categorised)

Definitions:

Category: The site performance score, determined by the lowest item performance score at each site.

Number of Sites in Category: A count of how many sites have the corresponding site performance score, with separate counts done at the start and the end of each year.

Category Description: Indicates the recommended action corresponding to the lowest item performance score (recorded in the asbestos register by a competent person, as per OHS & W Regulations (SA) 1995, 4.2.10).

Interpretation: A brief real-world example of what each category implies for a site.

Account Payment Statistics

	Number of Accounts Paid	% of Total Accounts Paid	Value of Accounts Paid	% \$ of Total Accounts Paid
Paid by Due Date*	3,058	84.5%	\$5,727,678.56	92.0%
Paid Late & Paid < 30 Days from Due Date	341	9.4%	\$373,166.40	6.0%
Paid Late & Paid > 30 Days from Due Date	219	6.1%	\$128,012.67	2.1%
Total Accounts Paid	3,618	100%	\$6,228,857.63	100%

*The Due Date is defined as per 11.2 of the instruction. Unless there is a discount or written agreement between the public authority and the creditors, payment should be within thirty days of the date of the invoice

Fraud And Legislative Compliance

No frauds or suspected frauds have occurred to the knowledge of the management of the South Australian Museum. The Museum has maintained a comprehensive system of checks and balances to control and prevent fraud, under the advice of the Auditor General's Department. Full disclosure has been made to the auditors regarding all non compliance obligations with laws and regulations that should be considered in preparing the Museums financial report.

CONSULTANTS – 2007-08

Value	No	Name	Description	Total Expenditure
Below \$10,000	13			\$62,000
\$10,000 - \$50,000	1	Consultants Paylnological Services	Researching palacoenvironment change in the Torres Strait Region	\$14,000
Above \$50,000	Nil			
			Total	\$76,000

7. FREEDOM OF INFORMATION ACT, 1991 PART 11 SECTION 9(2)

INFORMATION STATEMENT

Agency Structure and Functions: Section 9(2)(A)

The following information is contained in this Annual Report and is deemed to be consistent with the requirements of the Freedom of Information Act 1991:

- Statement of role and objectives
- Legislation responsibilities
- Resources employed

Agency performance is monitored regularly. Each year specific targets and objectives are formulated and major achievements, improvements and initiatives reported.

Effect of Agency's Functions on Members of the Public: Section 9(2)(B)

The Museum has a direct effect on the general public in two quite different ways. First as an institution whose display galleries are open for public education and enjoyment and second through the scientific divisions whose research and information are available to other Government Departments as well as the public.

The impact and involvement of each Division of the Museum in this process can be obtained from the achievements and initiatives section of this Annual Report.

Arrangements for Public Participation in Policy Formation: Section 9(2)(C)

The Board of eight members is appointed by the Minister for the Arts. These appointments are from the general public and provide an avenue for public participation in policy formulation.

For any major development, such as the development of displays relating to living cultures, advisory committees are established for the period of the project to ensure that there is full and proper provision for public participation.

In addition, the Museum maintains regular contact with Aboriginal community groups on matters relating to custodianship and access to collections.

Description of Kinds of Documents held by the Agency: Section 9(2)(D)

The Museum classifies all documents into the following categories:

Board Minutes

The Minutes of the Museum Board meetings are numbered and inserted in a Board Minute Book. Board papers are also numbered and filed in hard cover folders. The papers contain all documents and correspondence relating to the Board Meeting. Current Minute Books and Papers are kept in the Director's Office. Out of date Minute Books and Papers dating back to 1940 are stored in the Museum Archives section. Board papers and Minutes up to 1940 are permanently stored in State Records.

Dockets

Museum dockets are registered in a database system and held in the relevant department's administration sections. Dockets hold all documents concerned with the day to day management of the Museum and are classified as follows – collection management; development and design; education; governance – Museum Board; Indigenous services; information management; public programs; research; sponsorship; and volunteers.

Policy Statements

The Board has published several Policy Statements, which are available for use by the general public. These include: 'Professional and Commercial Services', 'Statement on Secret/Sacred Collection', 'Collections Policy (2005-2009)', 'Policy on Human Skeletal Remains Collection', 'Exhibition Policy', 'Publications Policy', 'Honorary Appointments', 'Guidelines for the Acquisition, Operation and Management of Computers in the Museum', and 'Access to Personal Information – policy and procedures', 'Procedures for Records Management' and 'Copyright Policy & Procedures'.

Access Arrangements, Procedures and Points of Contact: Section 9(2)(E)(F)

To gain access to Museum documents, other than those identified above as available, it is necessary to apply in writing under the Freedom of Information Act to:

Contact Officer, Freedom of Information

C/- The Director

South Australian Museum

North Terrace, Adelaide 5000

Freedom of Information

No inquiries under the Freedom of Information Act were received in 2007/2008.

INDEPENDENT AUDIT REPORT

Museum Board

INCOME STATEMENT For the Year Ended 30 June 2008

	Note Number	2008 \$'000	2007 \$'000
Expenses			
Employee benefits	4	5 284	4 898
Supplies and services	6	3 898	4 166
Accommodation and facilities	7	2 022	2 000
Depreciation	8	1 162	1 176
Grants and subsidies		93	102
Other expenses	9	-	135
Total expenses		12 459	12 477
Income			
Grants	11	784	1 153
Sale of goods		13	246
Fees and charges	12	341	607
Donations		172	128
Donations of heritage assets		986	85
Sponsorships		667	642
Interest		258	211
Resources received free of charge	2.3	491	488
Recoveries		289	330
Other income	13	293	177
Total income		4 294	4 067
Net cost of providing services		(8 165)	(8 410)
Revenues from SA Government			
Revenue from SA Government – recurrent operating grant		8 116	7 602
Revenue from SA Government – capital grant		30	981
Revenue from SA Government – accrual appropriation		-	19
Total revenues from SA Government		8 146	8 602
Net result		(19)	192
The net result is attributed to the SA Government as owner			

The above statement should be read in conjunction with the accompanying notes.

Museum Board

BALANCE SHEET

As at 30 June 2008

	Note Number	2008 \$'000	2007 \$'000
Current assets			
Cash	22	3 489	3 829
Receivables	14	672	571
Total current assets		4 161	4 400
Non-current assets			
Property, plant and equipment	15	35 183	31 708
Heritage collections	16	144 725	143 481
Total non-current assets		179 908	175 189
Total assets		184 069	179 589
Current liabilities			
Payables	17	218	277
Short-term employee benefits	18	663	581
Short-term provisions	19	42	36
Total current liabilities		923	894
Non-current liabilities			
Payables	17	93	88
Long-term employee benefits	18	999	918
Long-term provisions	19	110	98
Total non-current liabilities		1 202	1 104
Total liabilities		2 125	1 998
Net assets		181 944	177 591
Equity			
Retained earnings		133 378	133 397
Asset revaluation reserve		48 566	44 194
Total equity		181 944	177 591
The total equity is attributable to the SA Government as owner.			
Unrecognised contractual commitments	20		
Contingent assets and liabilities	21		

The above statement should be read in conjunction with the accompanying notes.

Museum Board

STATEMENT OF CHANGES IN EQUITY

For the Year Ended 30 June 2008

	Asset Revaluati Reserve \$'000	Retaine Earnin \$'000	Total \$'000
Balance at 30 June 2006	44 194	133 205	177 399
Net result for 2006-07	-	192	192
Balance at 30 June 2007	44 194	133 397	177 591
Gain on revaluation of land during 2007-08	1 960	-	1 960
Gain on revaluation of buildings during 2007-08	2 412	-	2 412
Net income recognised directly in equity for 2007-08	4 372	-	4 372
Net result for 2007-08	-	(19)	(19)
Total recognised income and expense for 2007-08	-	(19)	(19)
Balance at 30 June 2008	48 566	133 378	181 944

Changes in equity are attributable to the SA Government as owner.

The above statement should be read in conjunction with the accompanying notes.

Museum Board

CASH FLOW STATEMENT

For the Year Ended 30 June 2008

	Note Number	2008 \$'000	2007 \$'000
Cash flows from operating activities			
Cash outflows			
Employee benefits		(5 076)	(4 777)
Supplies and services		(3 374)	(3 651)
Accommodation and facilities		(2 099)	(1 925)
Grants and subsidies		(93)	(102)
Cash used in operations		(10 642)	(10 455)
Cash inflows			
Grants		591	1 119
Sale of Goods		12	253
Fees and charges		340	651
Donations		173	128
Sponsorships		780	319
Interest		253	208
Recoveries		300	344
Other		230	179
Cash generated from operations		2 679	3 201
Cash flows from SA Government			
Receipts from SA Government – recurrent operating grant		8 116	7 602
Receipts from SA Government – capital grant		30	981
Receipts from SA Government – accrual appropriation		-	19
Cash generated from SA Government		8 146	8 602
Net cash provided by operating activities	22	183	1 348
Cash flows from investing activities			
Cash outflows			
Payments for heritage collections		(259)	-
Payments for property, plant and equipment		(265)	(1 129)
Cash used in investing activities		(524)	(1 129)
Cash inflows			
Proceeds from Debtor		1	-
Cash generated from investing activities		1	-
Net cash used in investing activities		(523)	(1 129)
Net (decrease) increase in cash		(340)	219
Cash at the beginning of the financial year		3 829	3 610
Cash at the end of the financial year	22	3 489	3 829

The above statement should be read in conjunction with the accompanying notes.

NOTES TO THE FINANCIAL STATEMENTS

Note 1. Objectives of the Museum Board

The functions of the Museum Board (the Board), as prescribed under the *South Australian Museum Act 1976*, are as follows:

- Undertake the care and management of the Museum;
- Manage all lands and premises vested in, or placed under the control of, the Board;
- Manage all funds vested in, or under the control of the Board and to apply those funds in accordance with the terms and conditions of any instrument of trust or other instrument affecting the disposition of those moneys;
- Carry out, or promote, research into matters of scientific and historical interest;
- Accumulate and care for objects and specimens of scientific or historical interest;
- Accumulate and classify data in regard to any such matters;
- Disseminate information of scientific or historical interest; and
- Perform any other functions of scientific, educational or historical significance that may be assigned to the Board by regulation.

Note 2. Summary of significant accounting policies

2.1 Statement of compliance

The financial report is a general purpose financial report. The accounts have been prepared in accordance with applicable Accounting Standards and Treasurer's Instructions and Accounting Policy Statements promulgated under the provision of the *Public Finance and Audit Act 1987*.

Australian Accounting Standards include Australian equivalents to International Financial Reporting Standards and AAS 29 *Financial Reporting by Government Departments*. Australian Accounting Standards and Interpretations that have recently been issued or amended but are not yet effective have not been adopted by the Board for the reporting period ending 30 June 2008. Refer to note 3.

2.2 Basis of preparation

The preparation of the financial report requires:

- the use of certain accounting estimates and requires management to exercise its judgement in the process of applying the Board's accounting policies. The areas involving a higher degree of judgement or where assumptions and estimates are significant to the financial statements, these are outlined in the applicable notes; and
- compliance with Accounting Policy Statements issued pursuant to section 41 of the *Public Finance and Audit Act 1987*, by authority of Treasurer's Instruction 19 *Financial Reporting*. In the interest of public accountability and transparency the Accounting Policy Statements require the following note disclosures, that have been included in this financial report:
 - a) revenues, expenses, financial assets and liabilities where the counterparty/transaction is with an entity within the SA Government as at reporting date, classified according to their nature. A threshold of \$100 000 for separate identification of these items applies;
 - b) expenses incurred as a result of engaging consultants;
 - c) employee targeted voluntary separation package information;
 - d) employees whose normal remuneration is \$100 000 or more (within \$10 000 bandwidths) and the aggregate of the remuneration paid or payable or otherwise made available, directly or indirectly by the entity to those employees; and
 - e) board/committee member and remuneration information, where a board/committee member is entitled to receive income from membership other than a direct out-of-pocket reimbursement.

The Board's Income Statement, Balance Sheet and Statement of Changes in Equity have been prepared on an accrual basis and are in accordance with historical cost convention, except for certain assets that were valued in accordance with the valuation policy applicable.

The Cash Flow Statement has been prepared on a cash basis.

The financial report has been prepared based on a twelve month operating cycle and presented in Australian currency.

The accounting policies set out below have been applied in preparing the financial report for the year ended 30 June 2008 and the comparative information presented for the year ended 30 June 2007.

2.3 Sources of funds

The Board's principal source of funds consists of grants from the State Government. In addition, the Board also receives monies from sales, admissions, donations, bequests, sponsorships and other receipts, and uses the monies for the achievement of its objectives.

2.4 Income and expenses

Income and expenses are recognised in the Board's Income Statement to the extent it is probable that the flow of economic benefits to or from the entity will occur and can be reliably measured. Income and expenses have been classified according to their nature, and have not been offset unless required or permitted by a specific Accounting Standard, or where offsetting reflects the substance of the transaction or other event.

Income

Income from the sale of goods is recognised upon the delivery of goods to customers. Interest revenue is recognised on a proportional basis taking into account the interest rates applicable to the financial assets. Income from the rendering of a service is recognised upon the delivery of the service to the customers. Government grants are recognised as income in the period in which the Board obtains control over the grants.

Resources received free of charge

Resources received free of charge are recorded as revenue and expenditure in the Income Statement at their fair value.

Under an arrangement with Arts SA and Artlab Australia, divisions of the Department of the Premier and Cabinet, Artlab Australia receives SA Government appropriation to perform conservation services on the Board's heritage collections. The value of this work performed is recognised as resources received free of charge in income and a corresponding amount included as conservation work expenditure in supplies and services (Note 6).

Under an arrangement with the Services Division of the Department of the Premier and Cabinet, financial services and human resources are provided free of charge to the Board. The value of these services is recognised as resources received free of charge in income and a corresponding amount included as a business services charge in supplies and services (Note 6).

2.5 Current and non-current items

Assets and liabilities are characterised as either current or non-current in nature. The Board has a clearly identifiable operating cycle of twelve months. Assets and liabilities that will be realised as part of the normal operating cycle have been classified as current assets or current liabilities. All other assets and liabilities are classified as non-current.

2.6 Cash

Cash in the Balance Sheet includes cash at bank and cash on hand.

For the purposes of the Cash Flow Statement, cash is defined above. Cash is measured at nominal value.

2.7 Receivables

Receivables include amounts receivable from trade, prepayments and other accruals.

Trade receivables arise in the normal course of selling goods and services to other government agencies and the public. Trade receivables are generally receivable within 30 days after the issue of an invoice or the goods/services have been provided under a contractual arrangement.

The ability to collect trade receivables is reviewed on an ongoing basis. Debts that are known to be uncollectible are written off when identified. An allowance for doubtful debts is raised when there is objective evidence that the Board will not be able to collect the debt.

2.8 Non-current asset acquisition and recognition

The cost method of accounting is used for the initial recording of all acquisitions of assets. Cost is determined as the fair value of the assets given the consideration plus costs incidental to the acquisition. Assets donated during the year have been brought to account at fair value.

All non-current assets with a value of \$5,000 or greater are capitalised.

Componentisation of complex assets is only performed when the complex asset's fair value at the time of acquisition is greater than \$5 million for infrastructure assets and \$1 million for other assets.

2.9 Valuation of non-current assets

All non-current tangible assets are valued at written down current cost (a proxy for fair value) and a revaluation of non-current assets or a group of assets is only performed when its fair value at the time of acquisition is greater than \$1 million and estimated useful life is greater than three years.

Every three years the Board revalues its land, buildings and heritage collections. However, if at any time management considers the carrying amount of an asset materially differs from its fair value, then the asset will be revalued regardless of when the last valuation took place. Non-current tangible assets that are acquired between revaluations are held at cost until the next valuation, where they are revalued to fair value.

Any revaluation increment is credited to the asset revaluation reserve, except to the extent that it reverses a revaluation decrement of the same asset class previously recognised in the Income Statement, in which case the increase is recognised in the Income Statement.

Any revaluation decrement is recognised in the Income Statement, except to the extent that it offsets a previous revaluation increase of the same asset class, in which case the decrease is debited directly to the asset revaluation reserve to the extent of the credit balance existing in the revaluation reserve for that asset class.

Upon revaluation, the accumulated depreciation has been restated proportionately with the change in gross carrying amount of the asset so that the carrying amount, after revaluation, equals its revalued amount.

Upon disposal or de-recognition, any revaluation reserve relating to that asset is transferred to retained earnings.

Land and buildings

Land and buildings have been valued at fair value. Valuations of land and buildings were determined as at 30 June 2008 by the Australian Valuation Office.

Plant and equipment

Plant and equipment, including computer equipment, on acquisition has been deemed to be held at fair value.

Heritage collections

The Board's collections were revalued as at 30 June 2006 using the valuation methodology outlined below in accordance with fair value principles adopted under Australian Accounting Standard AASB 116 *Property, Plant and Equipment*. These valuations were undertaken by both external valuers and internal specialists.

The collections were broadly valued on the following basis:

Collection	Method of valuation
Heritage collections	Net market valuation
Natural History collections	Cost of recovery

Heritage collection status applies to those collections where an established market exists. The Net Market Valuation applied has been assessed either by valuation undertakings by staff and valuers or by applying valuations determined under the Taxation Incentives for the Arts Scheme.

Cost of recovery valuation has been applied to those collections that were previously valued at zero under deprival value methodology. These collections have been valued at fair value on the basis of the cost of fieldwork, preparation and documentation to replace the material in its present condition.

Internal valuations were carried out by staff specialists in their related fields. These valuations were based on a knowledge of the particular collections, an understanding of valuation techniques and the markets that exist for the collection items. Independent external valuers were engaged to review the methodology adopted for valuation and to verify the valuations applied by internal specialists via sampling techniques, and to carry out independent valuation where required.

Heritage collections deemed to have market value are Australian Ethnology, Foreign Ethnology, Malacology, Butterflies, Industrial History Collection, Mineralogy, Museum Library and Rare Books.

Natural History collections valued at cost of recovery are the Australian Biological Tissue Bank, the Australian Helminthological Collection, Entomology, Arachnology, Marine Invertebrates, Ichthyology, Herpetology, Ornithology and Mammalogy.

The external valuations were carried out by the following recognised industry experts:

Collection	Industry Expert
Australian Ethnology	Macaulay Partners
Museum Library and Rare Books	M Treloar and P Horn
Malacology (Marine Invertebrates)	W Rumble
Butterflies (Terrestrial Invertebrates)	L Mound
Mammalogy	R Schodde
Australian Polar Collection	M Treloar

Collections deemed to be culturally sensitive, including human remains or items which are secret and sacred to Aboriginal communities, have not been included within the current valuation and are deemed to be at zero valuation. These collections are Human Biology, Secret Sacred, Archives, Palaeontology and Archaeology.

2.10 Impairment of assets

All non-current assets are tested for indication of impairment at each reporting date. Where there is an indication of impairment, the recoverable amount is estimated. An amount by which the asset's carrying amount exceeds the recoverable amount is recorded as an impairment loss.

For re-valued assets an impairment loss is offset against the asset revaluation reserve.

2.11 Depreciation of non-current assets

Depreciation is calculated on a straight-line basis to write off the net cost or revalued amount of each non-current asset over its expected useful life, except for land and heritage collections, which are not depreciable. Estimates of remaining useful lives are made on a regular basis for all assets, with annual reassessments for major items.

The expected useful lives are as follows:

Class of asset	Useful life (years)
Buildings and improvements	20 to 100
Plant and equipment	5 to 15
Computer equipment	3 to 5

Heritage collections are kept under special conditions so that there is no physical deterioration and they are anticipated to have very long and indeterminate useful lives. No amount for depreciation has been recognised, as their service potential has not, in any material sense, been consumed during the reporting period.

2.12 Payables

Payables include creditors, accrued expenses and employment on-costs.

Creditors and accrued expenses represent goods and services provided by other parties during the period that are unpaid at the end of the reporting period. All payables are measured at their nominal amount and are normally settled within 30 days from the date of the invoice or date the invoice is first received.

Employment on-costs include superannuation contributions and payroll tax with respect to outstanding liabilities for salaries and wages, long service leave and annual leave.

2.13 Employee benefits

These benefits accrue for employees as a result of services provided up to the reporting date that remain unpaid. Long-term employee benefits are measured at present value and short-term benefits are measured at nominal amounts.

No provision has been made for sick leave as all sick leave is non-vesting and the average sick leave taken in future years by employees is estimated to be less than the annual entitlement of sick leave.

(i) Salaries, Wages and Annual Leave

1. Liabilities for wages, salaries and annual leave have been recognised as the amount unpaid at the reporting date. The liability for annual leave has been calculated at

nominal amounts based on current remuneration rates as at reporting date. The annual leave liability is expected to be payable within twelve months and is measured at the undiscounted amount expected to be paid. In the unusual event where salary and wages and annual leave are payable later than 12 months, the liability will be measured at present value.

(ii) *Long Service Leave*

2. A liability for long service leave is recognised after an employee has completed 6.5 years of service. An actuarial assessment of long service leave, undertaken by the Department of Treasury and Finance based on a significant sample of employees throughout the South Australian public sector, determined that the liability measured using the short hand method was not materially different from the liability measured using the present value of expected future payments. This calculation is consistent with the Board's experience of employee retention and leave taken.

3.

(iii) *On Costs*

Employee benefit on-costs (payroll tax, workcover and superannuation) are recognised separately under payables.

(iv) *Superannuation*

4. The Board makes contributions to several State Government and externally managed superannuation schemes. These contributions are treated as an expense when they occur. There is no liability for payments to beneficiaries as they have been assumed by the respective superannuation schemes. The only liability outstanding at balance date relates to any contributions due but not yet paid to the relevant superannuation schemes. The Department of Treasury and Finance centrally recognises the superannuation liability, for the schemes operated by the State Government, in the whole-of-government financial statements.

2.14 Workers compensation provision

A liability has been reported to reflect unsettled workers compensation claims. The workers compensation provision is based on an actuarial assessment performed by the Public Sector Workforce Division of the Department of the Premier and Cabinet.

2.15 Leases

The Board has entered into a number of operating lease agreements for accommodation, vehicles and office equipment where the lessors effectively retain all of the risks and benefits incidental to ownership of the items held under the operating leases. Operating lease payments are representative of the pattern of benefits derived from the leased assets and accordingly are charged to the Income Statement on a straight-line basis over the lease term.

2.16 Comparative information

The presentation and classification of items in the financial report are consistent with prior periods except where a specific Accounting Policy Statement or Australian Accounting Standard has required a change.

Where presentation or classification of items in the financial report has been amended the comparative amounts have been reclassified unless reclassification is impracticable.

The restated comparative amounts do not replace the original financial report for the proceeding period.

2.17 Taxation

The Board is not subject to income tax. The Board is liable for payroll tax, fringe benefits tax, goods and services tax (GST) and the emergency services levy.

Income, expenses and assets are recognised net of the amount of GST. The amount of GST incurred by the Board as a purchaser that is not recoverable from the Australian Taxation Office is recognised as part of the cost of acquisition of an asset or part of an item of expense.

The net GST receivable/payable to the Australian Taxation Office is not recognised as a receivable/payable in the Balance Sheet as the Board is a member of an approved GST group of which Arts SA, a division of the Department of the Premier and Cabinet, is responsible for the remittance and collection of GST. As such, there are no cash flows relating to GST transactions with the Australian Taxation Office in the Cash Flow Statement.

2.18 State Government funding

The financial report is presented under the assumption of ongoing financial support being provided to the Board by the State Government.

2.19 Rounding

All amounts in the financial report have been rounded to the nearest thousand dollars (\$'000).

2.20 Insurance

The Board has arranged, through SAICORP, a division of the SA Government Financing Authority, to insure all major risks of the Board. The excess payable is fixed under this arrangement.

2.21 Unrecognised contractual commitments and contingent assets and liabilities

Commitments include those operating, capital and outsourcing commitments arising from contractual or statutory sources and are disclosed at their nominal value.

Contingent assets and contingent liabilities are not recognised in the Balance Sheet, but are disclosed by way of a note and, if quantifiable, are measured at nominal value.

Unrecognised contractual commitments and contingencies are disclosed net of the amount of GST recoverable from, or payable to the Australian Taxation Office. If GST is not payable to, or recoverable from the Australian Taxation Office, the commitments and contingencies are disclosed on a gross basis.

2.22 Segment Reporting

The Board's predominant operation in South Australia is to care for the State's collections and research and disseminate matters of scientific and historical importance.

Note 3. Changes in accounting policies

The Australian Accounting Standards and Interpretations that have recently been issued or amended but are effective, have not been adopted by the Board for the reporting period ending 30 June 2008. The Board has assessed the impact of the new and amended Standards and considered there will be no impact on the accounting policies or the financial report of the Board.

Note 4. Employee benefits

	2008	2007
	\$'000	\$'000
Salaries and wages	4 282	3 885
Long service leave	168	214
Annual leave	33	63
Employment on-costs - superannuation	492	432
Employment on-costs - other	244	245
Board fees	18	18
Other employee related expenses	47	41
Total employee benefits	5 284	4 898

Remuneration of employees

The number of employees whose remuneration received or receivable falls within the following bands:

	Number of employees 2008	Number of employees 2007
\$100,000 - \$109,999	4	2
\$110,000 - \$119,999	1	-
\$120,000 - \$129,999	-	1
\$160,000 - \$169,999	1	-
Total number of employees	6	3

The table includes all employees who received remuneration of \$100 000 or more during the year. Remuneration of employees reflects all costs of employment including salaries and wages, superannuation contributions, fringe benefits tax and other salary sacrifice benefits. The total remuneration received by these employees for the year was \$690 000 (\$334 000).

Targeted Voluntary Separation Packages (TVSPs)

There were no TVSPs paid in either 2007-08 or 2006-07.

Note 5. Remuneration of board and committee members

Members that were entitled to receive remuneration for membership during the 2007-08 financial year were:

Museum Board (8 Members)

Aboriginal Advisory Committee (5 Members)

Museum Board

Mr J Ellice-Flint
Mr A Simpson
Mr P Ah Chee
Mr R Edwards
Dr S Carthew
Ms N Bensimon
Ms E D Perry
Ms N Buddle *

Aboriginal Advisory Committee

Mr P Ah Chee
Mr L O'Brien
Ms L O'Donohue
Mr D Ross
Ms B Marika

The number of members whose remuneration received or receivable falls within the following bands:	2008	2007
\$0 - \$9,999	13	13
Total number of members	13	13

Remuneration of members reflects all costs of performing board/committee member duties including sitting fees. The total remuneration received by members was \$18 000 (\$18 000).

Amounts paid to a superannuation plan for board/committee members were \$1 500 (\$1 500).

* In accordance with the Department of Premier and Cabinet Circular No. 16, government employees did not receive any remuneration for board/committee duties during the financial year.

Related party disclosures

Board members or their related entities have transactions with the Board that occur within a normal customer or supplier relationship on terms and conditions no more favorable than those with which it is reasonably expected the entity would have adopted if the transactions were undertaken with any other entity at arm's length in similar circumstances

Note 6. Supplies and services

	2008	2007
	\$'000	\$'000
Supplies and services provided by entities external to the SA Government		
Cost of goods sold	8	91
Marketing	175	238
Administration	388	278
IT services and communications	126	84
Maintenance	87	16
Collections	39	46
Exhibitions	154	337
Research	597	537
Travel and accommodation	206	204
Contractors	318	340
Motor vehicle expenses	4	25
Minor equipment	97	89
Fees	121	293
Consultants	76	37
Entertainment	78	32
Other	214	207
Total supplies and services - non SA Government entities	2 688	2 854

Supplies and services provided by entities within the SA Government

Insurance and risk management	309	347
Marketing	2	3
Administration	10	9
IT services and communications	153	165
Maintenance	80	55
Artlab conservation work	293	236
Business services charge	197	252
Collections	16	-
Research	58	114
Travel and accommodation	5	5
Motor vehicle expenses	41	46
Minor equipment	9	5
Fees	-	14
Other	37	61
Total supplies and services – SA Government entities	1 210	1 312
Total supplies and services	3 898	4 166

Payments to consultants

The dollar amount of consultancies paid/payable that fell within the following bands:	No	2008	No	2007
		\$'000		\$'000
\$0 - \$9 999	13	62	2	6
\$10 000 - \$50 000	1	14	2	31
Total paid/payable to the consultants engaged	14	76	4	37

Note 7. Accommodation and facilities

	2008	2007
	\$'000	\$'000
Accommodation and facilities provided by entities external to the SA Government		
Accommodation	280	272
Facilities	223	272
Security	665	713
Total accommodation and facilities – Non SA Government entities	1 168	1 257

Accommodation and facilities provided by entities within the SA Government

Accommodation	318	312
Facilities	534	425
Security	2	6
Total accommodation and facilities – SA Government entities	854	743
Total accommodation and facilities	2 022	2 000

Note 8. Depreciation

	2008	2007
	\$'000	\$'000
Buildings and improvements	1 087	1 087
Plant and equipment	67	82
Computer equipment	8	7
Total depreciation	1 162	1 176

Note 9. Other expenses

	2008 \$'000	2007 \$'000
Other expenses paid/payable to entities external to the SA Government		
Donation of assets	-	135
Total other	-	135

The Board donated inventory to the South Australian Museum Foundation Inc in 2006-07.

Note 10. Auditors remuneration

	2008 \$'000	2007 \$'000
Audit fees paid/payable to the Auditor-General's Department	23	24
Total audit fees - SA Government entities	23	24

Other services

No other services were provided by the Auditor-General's Department to the Board.

Note 11. Grants

	2008 \$'000	2007 \$'000
State Government grants	9	283
Other general grants	410	388
Commonwealth grants	365	482
Total grants	784	1 153

Note 12. Fees and charges

	2008 \$'000	2007 \$'000
Admissions	13	299
Functions	75	96
Fees for Service	133	100
Other	120	112
Total fees and charges	341	607

Note 13. Other income

	2008 \$'000	2007 \$'000
Other income received/receivable from entities external to the SA Government		
Rent	-	19
Exhibition Hire	47	1
Other	221	137
Total other income – Non SA Government entities	268	157

Other income received/receivable from entities within the SA Government

Other	25	20
Total other income – SA Government entities	25	20
Total other income	293	177

Note 14. Receivables

	2008	2007
	\$'000	\$'000
Receivables from entities external to the SA Government	638	537
Total receivables – Non SA Government entities	638	537
Receivables from entities within the SA Government	34	34
Total receivables – SA Government entities	34	34
Total receivables	672	571

Interest rate and credit risk

Receivables are raised for all goods and services provided for which payment has not been received. Receivables are normally settled within 30 days. Trade receivables are non-interest bearing. It is not anticipated that counterparties will fail to discharge their obligations. The carrying amount of receivables approximates net fair value due to being receivable on demand. In addition, there is no concentration of credit risk.

(a) Maturity analysis of receivables- refer to table 23.3 in Note 23.

(b) Categorisation of financial instruments and risk exposure information- refer to Note 23.

Note 15. Property, plant & equipment

	2008	2007
	\$'000	\$'000
Land, buildings and improvements		
Land at valuation	7 440	5 480
Buildings and improvements at valuation	58 693	51 052
Buildings and improvements at cost	-	1 192
Works in progress	279	43
Accumulated depreciation	(31 441)	(26 318)
Total Land, buildings and improvements	34 971	31 449
Plant and equipment		
Plant and equipment at cost (deemed fair value)	1 465	1 436
Accumulated depreciation	(1 260)	(1 193)
Total plant and equipment	205	243
Computer equipment		
Computer equipment at cost (deemed fair value)	52	52
Accumulated depreciation	(45)	(36)
Total computer equipment	7	16
Total property, plant and equipment	35 183	31 708

Valuation of non-current assets

The valuation of land, buildings and improvements was performed by the Australian Valuation Office as at 30 June 2008.

Reconciliation of property, plant and equipment

	Land	Buildings & improvements	Works in progress	Plant & equipment	Computer equipment	Total
	\$'000	\$'000	\$'000	\$'000	\$'000	\$'000
Carrying amount at 1 July	5 480	25 926	43	243	16	31 708
Additions	-	-	236	29	-	265
Revaluation increment	1 960	2 412	-	-	-	4 372
Depreciation expense	-	(1 086)	-	(67)	(9)	(1 162)
Carrying amount at 30 June	7 440	27 252	279	205	7	35 183

Note 16. Heritage Collections

	2008			2007		
	Net book value	At cost	Total net book value	Net book value	At cost	Total
	\$'000	\$'000	\$'000	\$'000	\$'000	\$'000
Social/Industrial History	239	-	239	239	-	239
Australian Aboriginal Ethnographic	20 637	258	20 895	20 211	-	20 211
Foreign Ethnology	7 027	-	7 027	6 963	-	6 963
Australian Polar Collection	3 744	-	3 744	3 258	-	3 258
Minerals	16 945	-	16 945	16 945	-	16 945
Malacology	4 110	-	4 110	4 110	-	4 110
Butterflies	35	-	35	35	-	35
Australian Biological Tissue Bank	7 352	-	7 352	7 352	-	7 352
Australian Helminthological Collection	11 727	-	11 727	11 727	-	11 727
Entomology	31 686	-	31 686	31 686	-	31 686
Arachnology	4 795	-	4 795	4 795	-	4 795
Marine Invertebrates	8 923	-	8 923	8 913	-	8 913
Ichthyology	1 819	-	1 819	1 819	-	1 819
Herpetology	4 200	-	4 200	4 200	-	4 200
Ornithology	8 939	-	8 939	8 939	-	8 939
Mammalogy	5 962	-	5 962	5 962	-	5 962
Fossil	719	-	719	719	-	719
Library	5 608	-	5 608	5 608	-	5 608
Total heritage collections	144 467	258	144 725	143 481	-	143 481

Reconciliation of carrying amounts of heritage collections

	2008			2007		
	Balance 1 July	Additions	Balance 30 June	Balance 1 July	Additions	Balance 30 June
	\$'000	\$'000	\$'000	\$'000	\$'000	\$'000
Social/Industrial History	239	-	239	239	-	239
Australian Aboriginal Ethnographic	20 211	684	20 895	20 211	-	20 211
Foreign Ethnology	6 963	64	7 027	6 963	-	6 963
Australian Polar Collection	3 258	486	3 744	3 258	-	3 258
Minerals	16 945	-	16 945	16 878	67	16 945
Malacology	4 110	-	4 110	4 110	-	4 110
Butterflies	35	-	35	35	-	35
Australian Biological Tissue Bank	7 352	-	7 352	7 352	-	7 352
Australian Helminthological Collection	11 727	-	11 727	11 727	-	11 727
Entomology	31 686	-	31 686	31 686	-	31 686
Arachnology	4 795	-	4 795	4 795	-	4 795
Marine Invertebrates	8 913	10	8 923	8 913	-	8 913
Ichthyology	1 819	-	1 819	1 819	-	1 819
Herpetology	4 200	-	4 200	4 200	-	4 200
Ornithology	8 939	-	8 939	8 939	-	8 939
Mammalogy	5 962	-	5 962	5 962	-	5 962
Fossil	719	-	719	700	19	719
Library	5 608	-	5 608	5 608	-	5 608
Carrying amount at 30 June	143 481	1 244	144 725	143 395	86	143 481

Note 17. Payables

	2008	2007
	\$'000	\$'000
Current		
Creditors and accruals	119	189
Employee on-costs	99	88
Total current payables	218	277
Non-current		
Employee on-costs	93	88
Total non-current payables	93	88
Total payables	311	365
Payables to Non SA Government entities		
Creditors and accruals	108	167
Total payables – Non SA Government entities	108	167
Payables to SA Government entities		
Creditors and accruals	10	22
Employee on-costs	193	176
Total payables – SA Government entities	203	198
Total payables	311	365

Interest rate and credit risk

Creditors and accruals are raised for all amounts billed but unpaid. Sundry creditors are normally settled within 30 days. Employment on-costs are settled when the respective employee benefit that they relate to is discharged. All payables are non-interest bearing. The carrying amount of payables approximates net fair value due to the amounts being payable on demand.

(a) Maturity analysis of payables- refer to table 23.3 in Note 23.

(b) Categorisation of financial instruments and risk exposure information- refer to Note 23.

Note 18. Employee benefits

	2008	2007
	\$'000	\$'000
Current		
Annual leave	382	348
Long service leave	186	160
Accrued salaries and wages	95	73
Total current employee benefits	663	581
Non-current		
Long service leave	999	918
Total non-current employee benefits	999	918
Total employee benefits	1 662	1 499

The total current and non-current employee expense (i.e. aggregate employee benefit plus related on costs) for 2007-08 is \$762 000 and \$1 092 000 respectively.

Based on an actuarial assessment performed by the Department of Treasury and Finance, the benchmark for the measurement of the long service leave liability has not changed from the 2007 benchmark (6.5 years).

Note 19. Provisions

	2008	2007
	\$'000	\$'000
Current		
Provision for workers compensation	42	36
Total current provisions	42	36
Non-current		
Provision for workers compensation	110	98
Total non-current provisions	110	98
Total provisions	152	134

Reconciliation of the provision for workers compensation

Provision at the beginning of the financial year	134	103
Increase in provision during the year	18	31
Provision for workers compensation at the end of the financial year	152	134

Note 20. Unrecognised contractual commitments

Operating lease commitments

Commitments under non-cancellable operating leases at the reporting date not recognised as liabilities in the financial report, are payable as follows:

	2008 \$'000	2007 \$'000
Not later than one year	389	430
Later than one year and not later than five years	162	601
Total operating lease commitments	551	1 031

The operating lease commitments comprise:

- Non-cancellable property leases, with rental payable monthly in advance. Contingent rental provisions within the lease agreements require the minimum lease payments to be increased by the Consumer Price Index. No options exist to renew the leases at the end of their terms.
- Non-cancellable motor vehicle leases, with rental payable monthly in arrears. No contingent rental provisions exist within the lease agreements and no options exist to renew the leases at the end of their terms.
- Non-cancellable photocopier leases, with rental payable monthly in arrears. No contingent rental provisions exist within the lease agreements and no options exist to renew the leases at the end of their terms.

Capital commitments

Capital commitments under contract at the reporting date, but not recognised as liabilities in the financial report, are payable as follows:

	2008 \$'000	2007 \$'000
Not later than one year	4 205	2 800
Later than one year and not later than five years	-	1 000
Total capital commitments	4 205	3 800

Remuneration commitments

Commitments for the payment of salaries and other remuneration under employment contracts in existence at the reporting date but not recognised as liabilities are payable as follows:

	2008 \$'000	2007 \$'000
Not later than one year	235	277
Later than one year and not later than five years	498	793
Total remuneration commitments	733	1 070

Amounts disclosed include commitments arising from executive and other service contracts. The Board does not offer remuneration contracts greater than five years.

Other commitments

	2008 \$'000	2007 \$'000
Not later than one year	900	888
Later than one year and not later than five years	313	1 260
Total other commitments	1 213	2 148

The Board's other commitments are for agreements for security and cleaning.

Contingent rental provisions within the contracts require the minimum contract payments to be increased by variable operating costs and wage rises. Options exist to renew the contracts for another 12 months.

Note 21. Contingent assets and liabilities

The Museum Board is not aware of any contingent assets or liabilities as at 30 June 2008.

Note 22. Cash flow reconciliation

Reconciliation of cash

For the purposes of the Cash Flow Statement, cash includes cash on hand and at bank. Cash as at the end of the financial year as shown in the Cash Flow Statement is reconciled to the items in the Balance Sheet as follows:

	2008	2007
	\$'000	\$'000
Deposits with Treasurer	3 478	3 818
Cash on hand	11	11
Cash as recorded in the Balance Sheet	3 489	3 829

Interest rate risk

Cash is recorded at its nominal amount. Interest is calculated based on the average daily balances of the interest bearing funds. The interest bearing funds of the Board are held in a Section 21 Interest Bearing Deposit Account titled the "Museum Board". Deposits with the Treasurer are bearing a floating interest rate between 6.17% and 7.09%.

	2008	2007
	\$'000	\$'000
Reconciliation of net cash provided by operating activities to net cost of providing services		
Net cash provided by operating activities	183	1 348
Less revenues from SA Government	(8 146)	(8 602)
Add (less) non cash items		
Depreciation of property, plant and equipment	(1 162)	(1 176)
Donations of heritage collections	986	85
Non-current assets recognised in payables	-	(22)
Changes in assets and liabilities		
Increase in receivables	101	295
(Decrease) in inventories	-	(129)
Decrease in payables	54	8
(Increase) in employee benefits	(163)	(186)
(Increase) in provisions	(18)	(31)
Net cost of providing services	(8 165)	(8 410)

Note 23. Financial instruments/Financial risk management

Table 23.1 Categorisation of financial instruments

Category of financial asset and financial liability	Balance Sheet line item	Note	Carrying amount	Fair value	Carrying amount	Fair value
			2008	2008	2007	2007
			\$'000	\$'000	\$'000	\$'000
Financial assets						
Cash	Cash	22	3 489	3 489	3 829	3 829
Receivables	Receivables ⁽¹⁾	14	672	672	571	571
Financial liabilities						
Financial liabilities at cost	Payables ⁽¹⁾	17	311	311	365	365

⁽¹⁾ "Receivable and payment amounts disclosed here exclude amounts relating to statutory receivables and payables. In government, certain rights to receive or pay cash may not be contractual and therefore in these situations, the requirements will not apply. Where rights or obligations have their source in legislation such as levy receivables/payables, tax equivalents, commonwealth tax, audit receivables/payables etc they would be excluded from the disclosure. The standard defines contract as enforceable by law." All amounts recorded are carried at cost (not materially different from amortised cost) except for employee on-costs which are determined via reference to the employee benefit liability to which they relate.

Credit risk

Credit risk arises when there is the possibility of the Board's debtors defaulting on their contractual obligations resulting in financial loss to the Board. The Board measures credit risk on a fair value basis and monitors risk on a regular basis.

The Board has minimal concentration of credit risk. The Board has policies and procedures in place to ensure that transactions occur with customers with appropriate credit history. The Board does not engage in high risk hedging for its financial assets.

Allowances for impairment of financial assets are calculated on past experience and current and expected changes in client credit rating. Currently the Board does not hold any collateral as security to any of its financial assets. Other than receivables, there is no evidence to indicate that the financial assets are impaired. Refer to Note 14 for information on the allowance for impairment in relation to receivables.

The following table discloses the ageing of financial assets, past due.

Table 23.2 Ageing analysis of financial assets

	Past due by			Total
	Overdue for < 30 days	Overdue for 30 – 60 days	Overdue for > 60 days	
2008	\$'000	\$'000	\$'000	\$'000
Not impaired				
Receivables	598	53	21	672
2007				
Not impaired				
Receivables	567	-	4	571

The following table discloses the maturity analysis of financial assets and financial liabilities.

Table 23.3: Maturity analysis of financial assets and liabilities

	Carrying amount (\$'000)	Contractual Maturities		
		< 1 year (\$'000)	1-5 years (\$'000)	> 5 years (\$'000)
2008				
Financial assets				
Cash	3 489	3 489	-	-
Receivables	672	672	-	-
Total financial assets	4 161	4 161	-	-
Financial liabilities				
Payables	311	218	93	-
Total financial liabilities	311	218	93	-
2007				
Financial assets				
Cash	3 829	3 829	-	-
Receivables	571	571	-	-
Total financial assets	4 400	4 400	-	-
Financial liabilities				
Payables	365	277	88	-
Total financial liabilities	365	277	88	-

Note 24. Events after balance date

There were no events occurring after balance date.

Museum Board

Certification of the Financial Report

We certify that the attached general purpose financial report for the Museum Board:

- complies with relevant Treasurer's instructions issued under section 41 of the *Public Finance and Audit Act 1987*, and relevant Australian accounting standards;
- are in accordance with the accounts and records of the Museum; and
- presents a true and fair view of the financial position of the Museum Board as at 30 June 2008 and the results of its operations and cash flows for the financial year

We certify that the internal controls employed by the Museum Board for the financial year over its financial reporting and its preparation of the general purpose financial report have been effective throughout the reporting period.

Dr Suzanne Miller
Director
SOUTH AUSTRALIAN MUSEUM

John Ellice - Flint
Chairman
MUSEUM BOARD